

DRG2 Antibody (Center)
Affinity Purified Rabbit Polyclonal Antibody (Pab)
Catalog # AP19144c**Specification**

DRG2 Antibody (Center) - Product Information

Application	WB,E
Primary Accession	P55039
Other Accession	Q9QXB9 , Q58D56 , NP_001379.1
Reactivity	Mouse
Predicted	Bovine
Host	Rabbit
Clonality	Polyclonal
Isotype	Rabbit IgG
Calculated MW	40746
Antigen Region	154-180

DRG2 Antibody (Center) - Additional Information**Gene ID** 1819**Other Names**

Developmentally-regulated GTP-binding protein 2, DRG-2, DRG2

Target/Specificity

This DRG2 antibody is generated from rabbits immunized with a KLH conjugated synthetic peptide between 154-180 amino acids from the Central region of human DRG2.

Dilution

WB~~1:1000

E~~Use at an assay dependent concentration.

Format

Purified polyclonal antibody supplied in PBS with 0.09% (W/V) sodium azide. This antibody is purified through a protein A column, followed by peptide affinity purification.

Storage

Maintain refrigerated at 2-8°C for up to 2 weeks. For long term storage store at -20°C in small aliquots to prevent freeze-thaw cycles.

Precautions

DRG2 Antibody (Center) is for research use only and not for use in diagnostic or therapeutic procedures.

DRG2 Antibody (Center) - Protein Information**Name** DRG2 {ECO:0000303|PubMed:29915238, ECO:0000312|HGNC:HGNC:3030}

Function Catalyzes the conversion of GTP to GDP through hydrolysis of the gamma-phosphate bond in GTP. When hydroxylated at C-3 of 'Lys-21' by JMJD7, may bind to RNA and play a role in translation.

Cellular Location

Nucleus. Cytoplasm

Tissue Location

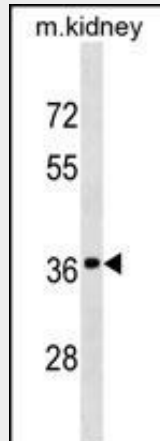
Highest levels in skeletal muscle, heart and kidney. Low levels in colon, thymus, spleen, small intestine, lung and Leukocytes

DRG2 Antibody (Center) - Protocols

Provided below are standard protocols that you may find useful for product applications.

- [Western Blot](#)
- [Blocking Peptides](#)
- [Dot Blot](#)
- [Immunohistochemistry](#)
- [Immunofluorescence](#)
- [Immunoprecipitation](#)
- [Flow Cytometry](#)
- [Cell Culture](#)

DRG2 Antibody (Center) - Images



DRG2 Antibody (Center) (Cat. #AP19144c) western blot analysis in mouse kidney tissue lysates (35ug/lane). This demonstrates the DRG2 antibody detected the DRG2 protein (arrow).

DRG2 Antibody (Center) - Background

The DRG2 gene encodes the developmentally regulated GTP-binding protein 2, a name derived from the fact that it shares significant similarity to known GTP-binding proteins. DRG2 was identified because it is expressed in normal fibroblasts but not in SV40-transformed fibroblasts. Read-through transcripts containing this gene and a downstream gene have been identified, but they are not thought to encode a fusion protein. This gene is located within the Smith-Magenis syndrome region on chromosome 17. [provided by RefSeq].

DRG2 Antibody (Center) - References

Song, H., et al. J. Biochem. 135(3):331-335(2004)
Bi, W., et al. Genome Res. 12(5):713-728(2002)
Li, B., et al. Biochim. Biophys. Acta 1491 (1-3), 196-204 (2000) :
Vlangos, C.N., et al. Cytogenet. Cell Genet. 88 (3-4), 283-285 (2000) :
Liang, Y., et al. Genomics 61(3):243-258(1999)