

MED30 Antibody (Center)
Affinity Purified Rabbit Polyclonal Antibody (Pab)
Catalog # AP19149C**Specification**

MED30 Antibody (Center) - Product Information

Application	WB,E
Primary Accession	O96HR3
Other Accession	O9CQI9 , NP_542382.1
Reactivity	Human
Predicted	Mouse
Host	Rabbit
Clonality	Polyclonal
Isotype	Rabbit IgG
Calculated MW	20277
Antigen Region	107-133

MED30 Antibody (Center) - Additional Information**Gene ID** 90390**Other Names**

Mediator of RNA polymerase II transcription subunit 30, Mediator complex subunit 30, TRAP/Mediator complex component TRAP25, Thyroid hormone receptor-associated protein 6, Thyroid hormone receptor-associated protein complex 25 kDa component, Trap25, MED30, THRAP6, TRAP25

Target/Specificity

This MED30 antibody is generated from rabbits immunized with a KLH conjugated synthetic peptide between 107-133 amino acids from the Central region of human MED30.

Dilution

WB~~1:1000

E~~Use at an assay dependent concentration.

Format

Purified polyclonal antibody supplied in PBS with 0.09% (W/V) sodium azide. This antibody is purified through a protein A column, followed by peptide affinity purification.

Storage

Maintain refrigerated at 2-8°C for up to 2 weeks. For long term storage store at -20°C in small aliquots to prevent freeze-thaw cycles.

Precautions

MED30 Antibody (Center) is for research use only and not for use in diagnostic or therapeutic procedures.

MED30 Antibody (Center) - Protein Information

Name MED30

Synonyms THRAP6, TRAP25

Function Component of the Mediator complex, a coactivator involved in the regulated transcription of nearly all RNA polymerase II-dependent genes. Mediator functions as a bridge to convey information from gene-specific regulatory proteins to the basal RNA polymerase II transcription machinery. Mediator is recruited to promoters by direct interactions with regulatory proteins and serves as a scaffold for the assembly of a functional preinitiation complex with RNA polymerase II and the general transcription factors.

Cellular Location

Nucleus.

Tissue Location

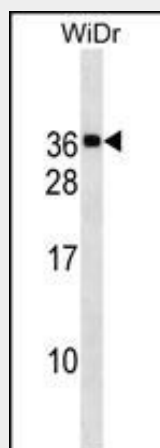
Expressed in brain, heart, kidney, liver, lung, pancreas, placenta and skeletal muscle.

MED30 Antibody (Center) - Protocols

Provided below are standard protocols that you may find useful for product applications.

- [Western Blot](#)
- [Blocking Peptides](#)
- [Dot Blot](#)
- [Immunohistochemistry](#)
- [Immunofluorescence](#)
- [Immunoprecipitation](#)
- [Flow Cytometry](#)
- [Cell Culture](#)

MED30 Antibody (Center) - Images



MED30 Antibody (Center) (Cat. #AP19149c) western blot analysis in WiDr cell line lysates (35ug/lane). This demonstrates the MED30 antibody detected the MED30 protein (arrow).

MED30 Antibody (Center) - Background

The multiprotein TRAP/Mediator complex facilitates gene expression through a wide variety of transcriptional activators. MED30 is a component of this complex that appears to be metazoan

specific (Baek et al., 2002 [PubMed 11909976]).

MED30 Antibody (Center) - References

Rienzo, M., et al. Biochim. Biophys. Acta 1799(7):487-495(2010)
Sato, S., et al. Mol. Cell 14(5):685-691(2004)
Tomomori-Sato, C., et al. J. Biol. Chem. 279(7):5846-5851(2004)
Sato, S., et al. J. Biol. Chem. 278(17):15123-15127(2003)
Wang, Q., et al. J. Biol. Chem. 277(45):42852-42858(2002)