

**TUFT1 Antibody (C-term)**  
**Affinity Purified Rabbit Polyclonal Antibody (Pab)**  
**Catalog # AP19158b****Specification**

---

**TUFT1 Antibody (C-term) - Product Information**

Application	WB,E
Primary Accession	<a href="#">O9NNX1</a>
Other Accession	<a href="#">O97557</a> , <a href="#">O08970</a> , <a href="#">P27628</a> , <a href="#">NP_001119809.1</a>
Reactivity	Mouse
Predicted	Bovine, Pig
Host	Rabbit
Clonality	Polyclonal
Isotype	Rabbit IgG
Calculated MW	44264
Antigen Region	276-304

**TUFT1 Antibody (C-term) - Additional Information****Gene ID** 7286**Other Names**

Tuftelin, TUFT1

**Target/Specificity**

This TUFT1 antibody is generated from rabbits immunized with a KLH conjugated synthetic peptide between 276-304 amino acids from the C-terminal region of human TUFT1.

**Dilution**

WB~~1:1000

E~~Use at an assay dependent concentration.

**Format**

Purified polyclonal antibody supplied in PBS with 0.09% (W/V) sodium azide. This antibody is purified through a protein A column, followed by peptide affinity purification.

**Storage**

Maintain refrigerated at 2-8°C for up to 2 weeks. For long term storage store at -20°C in small aliquots to prevent freeze-thaw cycles.

**Precautions**

TUFT1 Antibody (C-term) is for research use only and not for use in diagnostic or therapeutic procedures.

**TUFT1 Antibody (C-term) - Protein Information****Name** TUFT1

**Function** Involved in the structural organization of the epidermis (PubMed:[36689522](#)). Involved in the mineralization and structural organization of enamel.

**Cellular Location**

Secreted {ECO:0000250|UniProtKB:P27628}. Note=Secreted at a very early stage of enamel formation, concentrated at the dentin-enamel junction and tightly bound to the surface of the growing crystallites. {ECO:0000250|UniProtKB:P27628}

**Tissue Location**

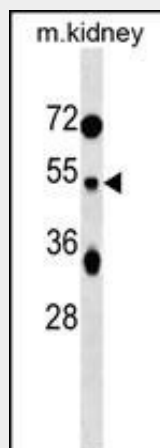
Expressed in the epidermis (at protein level) (PubMed:36689522). Present in the extracellular enamel and is mainly associated with the crystal component.

**TUFT1 Antibody (C-term) - Protocols**

Provided below are standard protocols that you may find useful for product applications.

- [Western Blot](#)
- [Blocking Peptides](#)
- [Dot Blot](#)
- [Immunohistochemistry](#)
- [Immunofluorescence](#)
- [Immunoprecipitation](#)
- [Flow Cytometry](#)
- [Cell Culture](#)

**TUFT1 Antibody (C-term) - Images**



TUFT1 Antibody (C-term) (Cat. #AP19158b) western blot analysis in mouse kidney tissue lysates (35ug/lane). This demonstrates the TUFT1 antibody detected the TUFT1 protein (arrow).

**TUFT1 Antibody (C-term) - Background**

TUFT1 is involved in the mineralization and structural organization of enamel.

**TUFT1 Antibody (C-term) - References**

Patir, A., et al. Caries Res. 42(5):394-400(2008)  
Clark, H.F., et al. Genome Res. 13(10):2265-2270(2003)  
Deutsch, D., et al. Connect. Tissue Res. 43 (2-3), 425-434 (2002) :  
Mao, Z., et al. Gene 279(2):181-196(2001)

Simpson, J.C., et al. EMBO Rep. 1(3):287-292(2000)