

CABP2 Antibody (N-term)
Affinity Purified Rabbit Polyclonal Antibody (Pab)
Catalog # AP19160a**Specification**

CABP2 Antibody (N-term) - Product Information

Application	WB,E
Primary Accession	O9NPB3
Other Accession	NP_112481.2
Reactivity	Human
Host	Rabbit
Clonality	Polyclonal
Isotype	Rabbit IgG
Calculated MW	24482
Antigen Region	1-30

CABP2 Antibody (N-term) - Additional Information**Gene ID** 51475**Other Names**

Calcium-binding protein 2, CaBP2, CABP2

Target/Specificity

This CABP2 antibody is generated from rabbits immunized with a KLH conjugated synthetic peptide between 1-30 amino acids from the N-terminal region of human CABP2.

Dilution

WB~~1:1000

E~~Use at an assay dependent concentration.

Format

Purified polyclonal antibody supplied in PBS with 0.09% (W/V) sodium azide. This antibody is purified through a protein A column, followed by peptide affinity purification.

Storage

Maintain refrigerated at 2-8°C for up to 2 weeks. For long term storage store at -20°C in small aliquots to prevent freeze-thaw cycles.

Precautions

CABP2 Antibody (N-term) is for research use only and not for use in diagnostic or therapeutic procedures.

CABP2 Antibody (N-term) - Protein Information**Name** CABP2**Function** Required for sound encoding at inner hair cells (IHCs) synapses, likely via inhibition of

the inactivation of voltage-gated calcium channel of type 1.3 (Cav1.3) in the IHCs (PubMed:[28183797](#)). Required for the normal transfer of light signals through the retina (By similarity).

Cellular Location

Cytoplasm, perinuclear region. Cell membrane; Lipid-anchor; Cytoplasmic side. Golgi apparatus

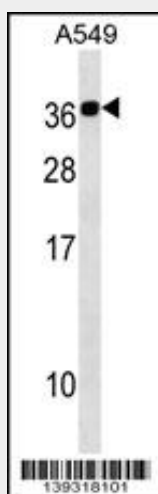
Tissue Location

Retina..

CABP2 Antibody (N-term) - Protocols

Provided below are standard protocols that you may find useful for product applications.

- [Western Blot](#)
- [Blocking Peptides](#)
- [Dot Blot](#)
- [Immunohistochemistry](#)
- [Immunofluorescence](#)
- [Immunoprecipitation](#)
- [Flow Cytometry](#)
- [Cell Culture](#)

CABP2 Antibody (N-term) - Images

CABP2 Antibody (N-term) (Cat. #AP19160a) western blot analysis in A549 cell line lysates (35ug/lane). This demonstrates the CABP2 antibody detected the CABP2 protein (arrow).

CABP2 Antibody (N-term) - Background

The function of this protein remains unknown.