

**RNF6 Antibody (C-term)**  
**Affinity Purified Rabbit Polyclonal Antibody (Pab)**  
**Catalog # AP19165b****Specification**

---

**RNF6 Antibody (C-term) - Product Information**

Application	WB,E
Primary Accession	<a href="#">O9Y252</a>
Other Accession	<a href="#">NP_898865.1</a>
Reactivity	Human
Host	Rabbit
Clonality	Polyclonal
Isotype	Rabbit IgG
Calculated MW	78091
Antigen Region	529-558

**RNF6 Antibody (C-term) - Additional Information****Gene ID** 6049**Other Names**

E3 ubiquitin-protein ligase RNF6, 632-, RNF6, SPG2

**Target/Specificity**

This RNF6 antibody is generated from rabbits immunized with a KLH conjugated synthetic peptide between 529-558 amino acids from the C-terminal region of human RNF6.

**Dilution**

WB~~1:1000

E~~Use at an assay dependent concentration.

**Format**

Purified polyclonal antibody supplied in PBS with 0.09% (W/V) sodium azide. This antibody is purified through a protein A column, followed by peptide affinity purification.

**Storage**

Maintain refrigerated at 2-8°C for up to 2 weeks. For long term storage store at -20°C in small aliquots to prevent freeze-thaw cycles.

**Precautions**

RNF6 Antibody (C-term) is for research use only and not for use in diagnostic or therapeutic procedures.

**RNF6 Antibody (C-term) - Protein Information****Name** RNF6 {ECO:0000303|PubMed:10331950, ECO:0000312|HGNC:HGNC:10069}**Function** E3 ubiquitin-protein ligase mediating 'Lys-48'-linked polyubiquitination of LIMK1 and its

subsequent targeting to the proteasome for degradation (By similarity). Negatively regulates axonal outgrowth through regulation of the LIMK1 turnover (By similarity). Mediates 'Lys-6' and 'Lys-27'-linked polyubiquitination of AR/androgen receptor thereby modulating its transcriptional activity (PubMed:[19345326](#)). May also bind DNA and function as a transcriptional regulator (By similarity). Mediates polyubiquitination of QKI in macrophages, leading to its degradation (By similarity).

#### Cellular Location

Nucleus. Cytoplasm. Cell projection, axon {ECO:0000250|UniProtKB:Q9DBU5}. Nucleus, PML body {ECO:0000250|UniProtKB:Q9DBU5}. Note=Localizes to the PML nuclear bodies in Sertoli cells. {ECO:0000250|UniProtKB:Q9DBU5}

#### Tissue Location

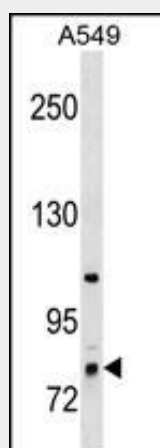
Weakly expressed in peripheral blood, spleen, prostate, testis and ovary (PubMed:19345326). According to a report, it is preferentially expressed in testis and ovary and hardly detected in other tissues (PubMed:18368307).

### RNF6 Antibody (C-term) - Protocols

Provided below are standard protocols that you may find useful for product applications.

- [Western Blot](#)
- [Blocking Peptides](#)
- [Dot Blot](#)
- [Immunohistochemistry](#)
- [Immunofluorescence](#)
- [Immunoprecipitation](#)
- [Flow Cytometry](#)
- [Cell Culture](#)

### RNF6 Antibody (C-term) - Images



RNF6 Antibody (C-term) (Cat. #AP19165b) western blot analysis in A549 cell line lysates (35ug/lane). This demonstrates the RNF6 antibody detected the RNF6 protein (arrow).

### RNF6 Antibody (C-term) - Background

The protein encoded by this gene contains a RING-H2 finger motif. Deletions and mutations in this gene were detected in esophageal squamous cell carcinoma (ESCC), suggesting that this

protein may be a potential tumor suppressor. Studies of the mouse counterpart suggested a role of this protein in the transcription regulation that controls germinal differentiation. Multiple alternatively spliced transcript variants encoding the same protein are observed.

#### **RNF6 Antibody (C-term) - References**

Xu, K., et al. Cancer Cell 15(4):270-282(2009)  
Zhu, L., et al. Sci. China, C, Life Sci. 51(4):302-307(2008)  
Tursun, B., et al. Genes Dev. 19(19):2307-2319(2005)  
Lo, H.S., et al. Cancer Res. 62(15):4191-4193(2002)  
Lopez, P., et al. Mol. Cell. Biol. 22(10):3488-3496(2002)