

UBASH3A Antibody (Center)
Affinity Purified Rabbit Polyclonal Antibody (Pab)
Catalog # AP19175c**Specification**

UBASH3A Antibody (Center) - Product Information

Application	WB,E
Primary Accession	P57075
Other Accession	NP_061834.1
Reactivity	Mouse
Host	Rabbit
Clonality	Polyclonal
Isotype	Rabbit IgG
Calculated MW	74123
Antigen Region	313-340

UBASH3A Antibody (Center) - Additional Information**Gene ID** 53347**Other Names**

Ubiquitin-associated and SH3 domain-containing protein A, Cbl-interacting protein 4, CLIP4, Suppressor of T-cell receptor signaling 2, STS-2, T-cell ubiquitin ligand 1, TULA-1, UBASH3A, STS2

Target/Specificity

This UBASH3A antibody is generated from rabbits immunized with a KLH conjugated synthetic peptide between 313-340 amino acids from the Central region of human UBASH3A.

Dilution

WB~~1:1000

E~~Use at an assay dependent concentration.

Format

Purified polyclonal antibody supplied in PBS with 0.09% (W/V) sodium azide. This antibody is purified through a protein A column, followed by peptide affinity purification.

Storage

Maintain refrigerated at 2-8°C for up to 2 weeks. For long term storage store at -20°C in small aliquots to prevent freeze-thaw cycles.

Precautions

UBASH3A Antibody (Center) is for research use only and not for use in diagnostic or therapeutic procedures.

UBASH3A Antibody (Center) - Protein Information**Name** UBASH3A

Synonyms STS2

Function Interferes with CBL-mediated down-regulation and degradation of receptor-type tyrosine kinases. Promotes accumulation of activated target receptors, such as T-cell receptors, EGFR and PDGFRB, on the cell surface. Exhibits negligible protein tyrosine phosphatase activity at neutral pH. May act as a dominant-negative regulator of UBASH3B- dependent dephosphorylation. May inhibit dynamin-dependent endocytic pathways by functionally sequestering dynamin via its SH3 domain.

Cellular Location

Cytoplasm. Nucleus.

Tissue Location

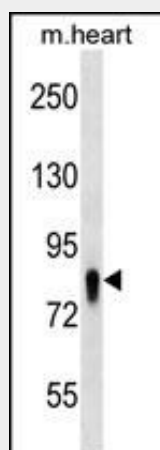
Highest expression of UBASH3A in tissues belonging to the immune system, including spleen, peripheral blood leukocytes, thymus and bone marrow.

UBASH3A Antibody (Center) - Protocols

Provided below are standard protocols that you may find useful for product applications.

- [Western Blot](#)
- [Blocking Peptides](#)
- [Dot Blot](#)
- [Immunohistochemistry](#)
- [Immunofluorescence](#)
- [Immunoprecipitation](#)
- [Flow Cytometry](#)
- [Cell Culture](#)

UBASH3A Antibody (Center) - Images



UBASH3A Antibody (Center) (Cat. #AP19175c) western blot analysis in mouse heart tissue lysates (35ug/lane). This demonstrates the UBASH3A antibody detected the UBASH3A protein (arrow).

UBASH3A Antibody (Center) - Background

UBASH3A interferes with CBL-mediated down-regulation and degradation of receptor-type tyrosine kinases. Promotes accumulation of activated target receptors, such as T-cell receptors, EGFR and PDGFRB, on the cell surface.

UBASH3A Antibody (Center) - References

Hinks, A., et al. Ann. Rheum. Dis. (2010) In press :
Stahl, E.A., et al. Nat. Genet. 42(6):508-514(2010)
Jin, Y., et al. N. Engl. J. Med. 362(18):1686-1697(2010)
Barrett, J.C., et al. Nat. Genet. 41(6):703-707(2009)
Smyth, D.J., et al. N. Engl. J. Med. 359(26):2767-2777(2008)