

RGMA Antibody (C-term)
Affinity Purified Rabbit Polyclonal Antibody (Pab)
Catalog # AP19179b**Specification**

RGMA Antibody (C-term) - Product Information

Application	WB,E
Primary Accession	O96B86
Other Accession	NP_001159758.1
Reactivity	Human
Host	Rabbit
Clonality	Polyclonal
Isotype	Rabbit IgG
Antigen Region	390-418

RGMA Antibody (C-term) - Additional Information**Gene ID** 56963**Other Names**

Repulsive guidance molecule A, RGM domain family member A, RGMA, RGM

Target/Specificity

This RGMA antibody is generated from rabbits immunized with a KLH conjugated synthetic peptide between 390-418 amino acids from the C-terminal region of human RGMA.

Dilution

WB~~1:1000

E~~Use at an assay dependent concentration.

Format

Purified polyclonal antibody supplied in PBS with 0.09% (W/V) sodium azide. This antibody is purified through a protein A column, followed by peptide affinity purification.

Storage

Maintain refrigerated at 2-8°C for up to 2 weeks. For long term storage store at -20°C in small aliquots to prevent freeze-thaw cycles.

Precautions

RGMA Antibody (C-term) is for research use only and not for use in diagnostic or therapeutic procedures.

RGMA Antibody (C-term) - Protein Information**Name** RGMA ([HGNC:30308](#))**Synonyms** RGM

Function Member of the repulsive guidance molecule (RGM) family that performs several functions in the developing and adult nervous system. Regulates cephalic neural tube closure, inhibits neurite outgrowth and cortical neuron branching, and the formation of mature synapses. Binding to its receptor NEO1/neogenin induces activation of RHOA- ROCK1/Rho-kinase signaling pathway through UNC5B-ARHGEF12/LARG- PTK2/FAK1 cascade, leading to collapse of the neuronal growth cone and neurite outgrowth inhibition. Furthermore, RGMA binding to NEO1/neogenin leads to HRAS inactivation by influencing HRAS-PTK2/FAK1- AKT1 pathway. It also functions as a bone morphogenetic protein (BMP) coreceptor that may signal through SMAD1, SMAD5, and SMAD8.

Cellular Location

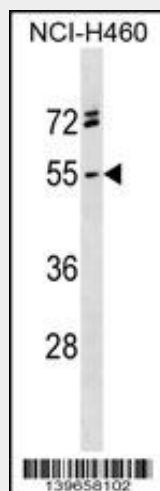
Cell membrane; Lipid-anchor, GPI- anchor

RGMA Antibody (C-term) - Protocols

Provided below are standard protocols that you may find useful for product applications.

- [Western Blot](#)
- [Blocking Peptides](#)
- [Dot Blot](#)
- [Immunohistochemistry](#)
- [Immunofluorescence](#)
- [Immunoprecipitation](#)
- [Flow Cytometry](#)
- [Cell Culture](#)

RGMA Antibody (C-term) - Images



RGMA Antibody (C-term) (Cat. #AP19179b) western blot analysis in NCI-H460 cell line lysates (35ug/lane). This demonstrates the RGMA antibody detected the RGMA protein (arrow).

RGMA Antibody (C-term) - Background

This gene encodes a member of the repulsive guidance molecule family. The encoded protein is a glycosylphosphatidylinositol-anchored glycoprotein that functions as an axon guidance protein in the developing and adult central nervous system. This protein may also function as a tumor suppressor in some cancers. Alternate splicing results in multiple transcript variants.

RGMA Antibody (C-term) - References

Nohra, R., et al. Genes Immun. 11(4):279-293(2010)
Severyn, C.J., et al. Biochem. J. 422(3):393-403(2009)
Li, V.S., et al. Gastroenterology 137(1):176-187(2009)
Endo, M., et al. J. Neurosci. 29(20):6649-6662(2009)
Hata, K., et al. J. Cell Biol. 184(5):737-750(2009)