

RN3L1 Antibody (C-term)
Affinity Purified Rabbit Polyclonal Antibody (Pab)
Catalog # AP19182b**Specification**

RN3L1 Antibody (C-term) - Product Information

Application	WB,E
Primary Accession	A6NIE6
Reactivity	Human
Host	Rabbit
Clonality	Polyclonal
Isotype	Rabbit IgG
Calculated MW	38035
Antigen Region	286-312

RN3L1 Antibody (C-term) - Additional Information**Other Names**

Putative RRN3-like protein RRN3P2, RNA polymerase I transcription factor homolog pseudogene 2, RRN3P2

Target/Specificity

This RN3L1 antibody is generated from rabbits immunized with a KLH conjugated synthetic peptide between 286-312 amino acids from the C-terminal region of human RN3L1.

Dilution

WB~~1:1000

E~~Use at an assay dependent concentration.

Format

Purified polyclonal antibody supplied in PBS with 0.09% (W/V) sodium azide. This antibody is purified through a protein A column, followed by peptide affinity purification.

Storage

Maintain refrigerated at 2-8°C for up to 2 weeks. For long term storage store at -20°C in small aliquots to prevent freeze-thaw cycles.

Precautions

RN3L1 Antibody (C-term) is for research use only and not for use in diagnostic or therapeutic procedures.

RN3L1 Antibody (C-term) - Protein Information

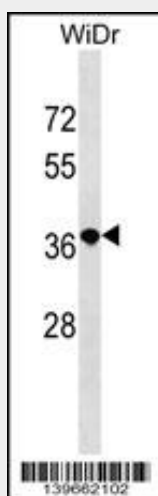
Name RRN3P2

RN3L1 Antibody (C-term) - Protocols

Provided below are standard protocols that you may find useful for product applications.

- [Western Blot](#)
- [Blocking Peptides](#)
- [Dot Blot](#)
- [Immunohistochemistry](#)
- [Immunofluorescence](#)
- [Immunoprecipitation](#)
- [Flow Cytometry](#)
- [Cell Culture](#)

RN3L1 Antibody (C-term) - Images



RN3L1 Antibody (C-term) (Cat. #AP19182b) western blot analysis in WiDr cell line lysates (35ug/lane). This demonstrates the RN3L1 antibody detected the RN3L1 protein (arrow).

RN3L1 Antibody (C-term) - Background

The function of this protein remains unknown.