

**CD300E Antibody (Center)**  
**Affinity Purified Rabbit Polyclonal Antibody (Pab)**  
**Catalog # AP19184c****Specification**

---

**CD300E Antibody (Center) - Product Information**

Application	WB,E
Primary Accession	<a href="#">Q496F6</a>
Other Accession	<a href="#">NP_852114.1</a>
Reactivity	Human
Host	Rabbit
Clonality	Polyclonal
Isotype	Rabbit IgG
Calculated MW	22918
Antigen Region	48-76

**CD300E Antibody (Center) - Additional Information****Gene ID** 342510**Other Names**

CMRF35-like molecule 2, CLM-2, CD300 antigen-like family member E, CMRF35-A5, Immune receptor expressed on myeloid cells 2, IREM-2, Polymeric immunoglobulin receptor 2, PlgR-2, PlgR2, Poly-Ig receptor 2, CD300e, CD300E, CD300LE, CLM2, CMRF35A5, IREM2

**Target/Specificity**

This CD300E antibody is generated from rabbits immunized with a KLH conjugated synthetic peptide between 48-76 amino acids from the Central region of human CD300E.

**Dilution**

WB~~1:1000

**Format**

Purified polyclonal antibody supplied in PBS with 0.09% (W/V) sodium azide. This antibody is purified through a protein A column, followed by peptide affinity purification.

**Storage**

Maintain refrigerated at 2-8°C for up to 2 weeks. For long term storage store at -20°C in small aliquots to prevent freeze-thaw cycles.

**Precautions**

CD300E Antibody (Center) is for research use only and not for use in diagnostic or therapeutic procedures.

**CD300E Antibody (Center) - Protein Information****Name** CD300E

**Synonyms** CD300LE, CLM2, CMRF35A5, IREM2

**Function** Probably acts as an activating receptor.

**Cellular Location**

Cell membrane; Single-pass type I membrane protein

**Tissue Location**

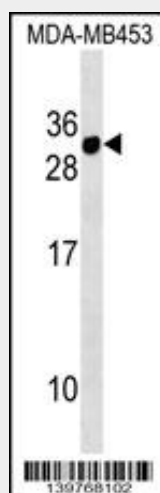
Present on the surface of mature hematopoietic cells of the monocyte and myeloid lineages (at protein level)

**CD300E Antibody (Center) - Protocols**

Provided below are standard protocols that you may find useful for product applications.

- [Western Blot](#)
- [Blocking Peptides](#)
- [Dot Blot](#)
- [Immunohistochemistry](#)
- [Immunofluorescence](#)
- [Immunoprecipitation](#)
- [Flow Cytometry](#)
- [Cell Culture](#)

**CD300E Antibody (Center) - Images**



CD300E Antibody (Center) (Cat. #AP19184c) western blot analysis in MDA-MB453 cell line lysates (35ug/lane). This demonstrates the CD300E antibody detected the CD300E protein (arrow).

**CD300E Antibody (Center) - Background**

CD300E probably acts as an activating receptor.