

GRPEL2 Antibody (N-term)
Affinity Purified Rabbit Polyclonal Antibody (Pab)
Catalog # AP19185a

Specification

GRPEL2 Antibody (N-term) - Product Information

Application	WB,E
Primary Accession	Q8TAA5
Other Accession	NP_689620.2
Reactivity	Human, Mouse
Host	Rabbit
Clonality	Polyclonal
Isotype	Rabbit IgG
Calculated MW	25431
Antigen Region	14-43

GRPEL2 Antibody (N-term) - Additional Information

Gene ID 134266

Other Names

GrpE protein homolog 2, mitochondrial, Mt-GrpE#2, GRPEL2

Target/Specificity

This GRPEL2 antibody is generated from rabbits immunized with a KLH conjugated synthetic peptide between 14-43 amino acids from the N-terminal region of human GRPEL2.

Dilution

WB~~1:1000

Format

Purified polyclonal antibody supplied in PBS with 0.09% (W/V) sodium azide. This antibody is purified through a protein A column, followed by peptide affinity purification.

Storage

Maintain refrigerated at 2-8°C for up to 2 weeks. For long term storage store at -20°C in small aliquots to prevent freeze-thaw cycles.

Precautions

GRPEL2 Antibody (N-term) is for research use only and not for use in diagnostic or therapeutic procedures.

GRPEL2 Antibody (N-term) - Protein Information

Name GRPEL2

Function Essential component of the PAM complex, a complex required for the translocation of transit peptide-containing proteins from the inner membrane into the mitochondrial matrix in an

ATP-dependent manner. Seems to control the nucleotide-dependent binding of mitochondrial HSP70 to substrate proteins. Stimulates ATPase activity of mt-HSP70. May also serve to modulate the interconversion of oligomeric (inactive) and monomeric (active) forms of mt-HSP70 (By similarity).

Cellular Location

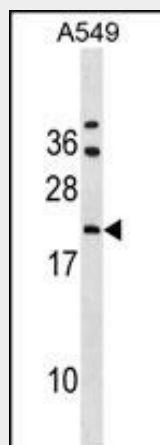
Mitochondrion matrix.

GRPEL2 Antibody (N-term) - Protocols

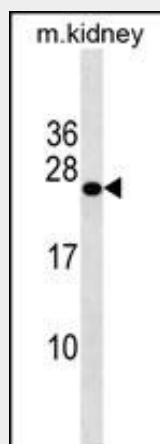
Provided below are standard protocols that you may find useful for product applications.

- [Western Blot](#)
- [Blocking Peptides](#)
- [Dot Blot](#)
- [Immunohistochemistry](#)
- [Immunofluorescence](#)
- [Immunoprecipitation](#)
- [Flow Cytometry](#)
- [Cell Culture](#)

GRPEL2 Antibody (N-term) - Images



GRPEL2 Antibody (N-term) (Cat. #AP19185a) western blot analysis in A549 cell line lysates (35ug/lane). This demonstrates the GRPEL2 antibody detected the GRPEL2 protein (arrow).



GRPEL2 Antibody (N-term) (Cat. #AP19185a) western blot analysis in mouse kidney tissue lysates (35ug/lane). This demonstrates the GRPEL2 antibody detected the GRPEL2 protein (arrow).

GRPEL2 Antibody (N-term) - Background

Essential component of the PAM complex, a complex required for the translocation of transit peptide-containing proteins from the inner membrane into the mitochondrial matrix in an ATP-dependent manner. Seems to control the nucleotide-dependent binding of mitochondrial HSP70 to substrate proteins. Stimulates ATPase activity of mt-HSP70. May also serve to modulate the interconversion of oligomeric (inactive) and monomeric (active) forms of mt-HSP70 (By similarity).

GRPEL2 Antibody (N-term) - References

Lamesch, P., et al. Genomics 89(3):307-315(2007)
Naylor, D.J., et al. J. Biol. Chem. 273(33):21169-21177(1998)