

PANX2 Antibody (C-term)
Affinity Purified Rabbit Polyclonal Antibody (Pab)
Catalog # AP19188b

Specification

PANX2 Antibody (C-term) - Product Information

Application	WB,E
Primary Accession	O96RD6
Other Accession	NP_001153772.1
Reactivity	Human
Host	Rabbit
Clonality	Polyclonal
Isotype	Rabbit IgG
Calculated MW	74447
Antigen Region	647-677

PANX2 Antibody (C-term) - Additional Information

Gene ID 56666

Other Names

Pannexin-2, PANX2

Target/Specificity

This PANX2 antibody is generated from rabbits immunized with a KLH conjugated synthetic peptide between 647-677 amino acids from the C-terminal region of human PANX2.

Dilution

WB~~1:1000

E~~Use at an assay dependent concentration.

Format

Purified polyclonal antibody supplied in PBS with 0.09% (W/V) sodium azide. This antibody is purified through a protein A column, followed by peptide affinity purification.

Storage

Maintain refrigerated at 2-8°C for up to 2 weeks. For long term storage store at -20°C in small aliquots to prevent freeze-thaw cycles.

Precautions

PANX2 Antibody (C-term) is for research use only and not for use in diagnostic or therapeutic procedures.

PANX2 Antibody (C-term) - Protein Information

Name PANX2 ([HGNC:8600](#))

Function Ion channel with a slight anion preference (PubMed:[36973289](#)). Also able to release ATP

(PubMed:[36869038](#)). Plays a role in regulating neurogenesis and apoptosis in keratinocytes (By similarity).

Cellular Location

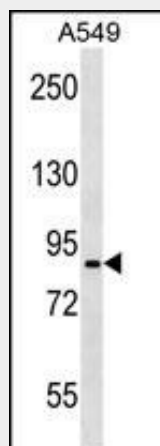
Cell membrane; Multi-pass membrane protein {ECO:0000255|PROSITE-ProRule:PRU00351} Golgi apparatus membrane {ECO:0000250|UniProtKB:Q6IMP4}; Multi-pass membrane protein {ECO:0000255|PROSITE-ProRule:PRU00351}. Endoplasmic reticulum membrane {ECO:0000250|UniProtKB:Q6IMP4}; Multi-pass membrane protein {ECO:0000255|PROSITE-ProRule:PRU00351}. Note=Localizes to Golgi apparatus and endoplasmic reticulum in multipotential neural stem and progenitor cells and to plasma membrane in terminally differentiated neurons. {ECO:0000250|UniProtKB:Q6IMP4}

PANX2 Antibody (C-term) - Protocols

Provided below are standard protocols that you may find useful for product applications.

- [Western Blot](#)
- [Blocking Peptides](#)
- [Dot Blot](#)
- [Immunohistochemistry](#)
- [Immunofluorescence](#)
- [Immunoprecipitation](#)
- [Flow Cytometry](#)
- [Cell Culture](#)

PANX2 Antibody (C-term) - Images



PANX2 Antibody (C-term) (Cat. #AP19188b) western blot analysis in A549 cell line lysates (35ug/lane). This demonstrates the PANX2 antibody detected the PANX2 protein (arrow).

PANX2 Antibody (C-term) - Background

The protein encoded by this gene belongs to the innexin family. Innexin family members are the structural components of gap junctions. This protein and pannexin 1 are abundantly expressed in central nervous system (CNS) and are coexpressed in various neuronal populations. Studies in *Xenopus* oocytes suggest that this protein alone and in combination with pannexin 1 may form cell type-specific gap junctions with distinct properties. Multiple transcript variants encoding different isoforms have been found for

this gene.

PANX2 Antibody (C-term) - References

Ambrosi, C., et al. J. Biol. Chem. 285(32):24420-24431(2010)
Yoshida, T., et al. Int. J. Mol. Med. 25(4):649-656(2010)
Oguri, M., et al. Am. J. Hypertens. 23(1):70-77(2010)
Lai, C.P., et al. Oncogene 28(49):4402-4408(2009)
Wu, C., et al. Proteomics 7(11):1775-1785(2007)