

LRRC39 Antibody (N-term)
Affinity Purified Rabbit Polyclonal Antibody (Pab)
Catalog # AP19189a**Specification**

LRRC39 Antibody (N-term) - Product Information

| | |
|-------------------|--|
| Application | WB,E |
| Primary Accession | Q96DD0 |
| Other Accession | Q8BGI7 , NP_653221.1 |
| Reactivity | Human |
| Predicted | Mouse |
| Host | Rabbit |
| Clonality | Polyclonal |
| Isotype | Rabbit IgG |
| Calculated MW | 38793 |
| Antigen Region | 15-41 |

LRRC39 Antibody (N-term) - Additional Information**Gene ID** 127495**Other Names**

Leucine-rich repeat-containing protein 39, Densin hlg, LRRC39

Target/Specificity

This LRRC39 antibody is generated from rabbits immunized with a KLH conjugated synthetic peptide between 15-41 amino acids from the N-terminal region of human LRRC39.

Dilution

WB~~1:1000

Format

Purified polyclonal antibody supplied in PBS with 0.09% (W/V) sodium azide. This antibody is purified through a protein A column, followed by peptide affinity purification.

Storage

Maintain refrigerated at 2-8°C for up to 2 weeks. For long term storage store at -20°C in small aliquots to prevent freeze-thaw cycles.

Precautions

LRRC39 Antibody (N-term) is for research use only and not for use in diagnostic or therapeutic procedures.

LRRC39 Antibody (N-term) - Protein Information**Name** LRRC39**Function** Component of the sarcomeric M-band which plays a role in myocyte response to

biomechanical stress. May regulate expression of other M-band proteins via an SRF-dependent pathway. Important for normal contractile function in heart.

Cellular Location

Cytoplasm, myofibril, sarcomere, M line {ECO:0000250|UniProtKB:D3ZXS4}

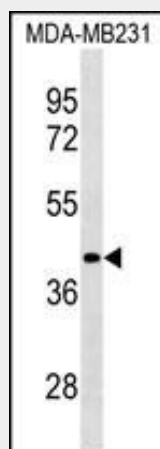
Tissue Location

Highly expressed in skeletal muscle and heart. Not detected in other tissues tested.

LRRC39 Antibody (N-term) - Protocols

Provided below are standard protocols that you may find useful for product applications.

- [Western Blot](#)
- [Blocking Peptides](#)
- [Dot Blot](#)
- [Immunohistochemistry](#)
- [Immunofluorescence](#)
- [Immunoprecipitation](#)
- [Flow Cytometry](#)
- [Cell Culture](#)

LRRC39 Antibody (N-term) - Images

LRRC39 Antibody (N-term) (Cat. #AP19189a) western blot analysis in MDA-MB231 cell line lysates (35ug/lane). This demonstrates the LRRC39 antibody detected the LRRC39 protein (arrow).

LRRC39 Antibody (N-term) - Background

The function of this protein remains unknown.

LRRC39 Antibody (N-term) - References

Rose, J.E., et al. Mol. Med. 16 (7-8), 247-253 (2010) :
Clark, H.F., et al. Genome Res. 13(10):2265-2270(2003)