

NAP1L1 Antibody (C-term)
Purified Rabbit Polyclonal Antibody (Pab)
Catalog # AP1920a**Specification**

NAP1L1 Antibody (C-term) - Product Information

Application	WB, FC,E
Primary Accession	P55209
Other Accession	O9Z2G8 , P28656 , A6H767
Reactivity	Human
Predicted	Bovine, Mouse, Rat
Host	Rabbit
Clonality	Polyclonal
Isotype	Rabbit IgG
Calculated MW	45374
Antigen Region	352-381

NAP1L1 Antibody (C-term) - Additional Information**Gene ID** 4673**Other Names**

Nucleosome assembly protein 1-like 1, NAP-1-related protein, hNRP, NAP1L1, NRP

Target/Specificity

This NAP1L1 antibody is generated from rabbits immunized with a KLH conjugated synthetic peptide between 352-381 amino acids from the C-terminal region of human NAP1L1.

Dilution

WB~~1:1000

FC~~1:10~50

E~~Use at an assay dependent concentration.

Format

Purified polyclonal antibody supplied in PBS with 0.09% (W/V) sodium azide. This antibody is prepared by Saturated Ammonium Sulfate (SAS) precipitation followed by dialysis against PBS.

Storage

Maintain refrigerated at 2-8°C for up to 2 weeks. For long term storage store at -20°C in small aliquots to prevent freeze-thaw cycles.

Precautions

NAP1L1 Antibody (C-term) is for research use only and not for use in diagnostic or therapeutic procedures.

NAP1L1 Antibody (C-term) - Protein Information**Name** NAP1L1

Synonyms NRP

Function Histone chaperone that plays a role in the nuclear import of H2A-H2B and nucleosome assembly (PubMed:[20002496](#), PubMed:[21211722](#), PubMed:[26841755](#)). Also participates in several important DNA repair mechanisms: greatly enhances ERCC6-mediated chromatin remodeling which is essential for transcription-coupled nucleotide excision DNA repair (PubMed:[28369616](#)). Also stimulates homologous recombination (HR) by RAD51 and RAD54 which is essential in mitotic DNA double strand break (DSB) repair (PubMed:[24798879](#)). Plays a key role in the regulation of embryonic neurogenesis (By similarity). Promotes the proliferation of neural progenitors and inhibits neuronal differentiation during cortical development (By similarity). Regulates neurogenesis via the modulation of RASSF10; regulates RASSF10 expression by promoting SETD1A-mediated H3K4 methylation at the RASSF10 promoter (By similarity).

Cellular Location

Nucleus. Melanosome. Cytoplasm. Note=Identified by mass spectrometry in melanosome fractions from stage I to stage IV

Tissue Location

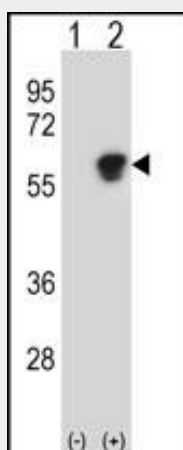
Ubiquitously expressed.

NAP1L1 Antibody (C-term) - Protocols

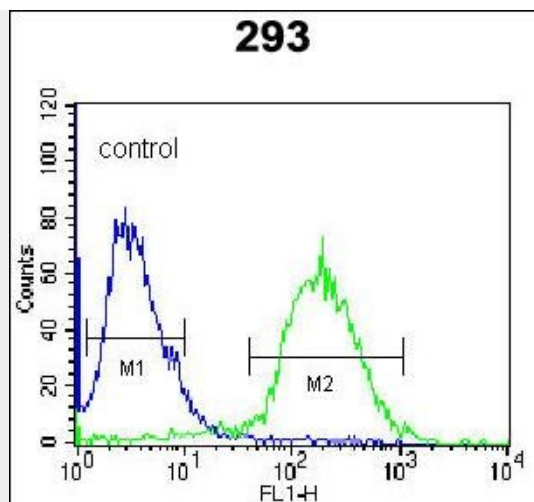
Provided below are standard protocols that you may find useful for product applications.

- [Western Blot](#)
- [Blocking Peptides](#)
- [Dot Blot](#)
- [Immunohistochemistry](#)
- [Immunofluorescence](#)
- [Immunoprecipitation](#)
- [Flow Cytometry](#)
- [Cell Culture](#)

NAP1L1 Antibody (C-term) - Images



Western blot analysis of NAP1L1 (arrow) using rabbit polyclonal NAP1L1 Antibody (Cat. #AP1920a). 293 cell lysates (2 ug/lane) either nontransfected (Lane 1) or transiently transfected (Lane 2) with the NAP1L1 gene.



NAP1L1 Antibody (C-term) (Cat. #AP1920a) flow cytometric analysis of 293 cells (right histogram) compared to a negative control cell (left histogram). FITC-conjugated goat-anti-rabbit secondary antibodies were used for the analysis.

NAP1L1 Antibody (C-term) - Background

NAP1L1 is a member of the nucleosome assembly protein (NAP) family. This protein participates in DNA replication and may play a role in modulating chromatin formation and contribute to the regulation of cell proliferation.

NAP1L1 Antibody (C-term) - References

Rehtanz, M., et al., Mol. Cell. Biol. 24(5):2153-2168 (2004). Simon, H.U., et al., Biochem. J. 297 (PT 2), 389-397 (1994) (): ().