

**NAP1L1 Antibody (N-term)**  
**Purified Rabbit Polyclonal Antibody (Pab)**  
**Catalog # AP1920b****Specification**

---

**NAP1L1 Antibody (N-term) - Product Information**

Application	WB,E
Primary Accession	<a href="#">P55209</a>
Other Accession	<a href="#">Q9Z2G8</a> , <a href="#">P28656</a> , <a href="#">A6H767</a>
Reactivity	Human
Predicted	Bovine, Mouse, Rat
Host	Rabbit
Clonality	Polyclonal
Isotype	Rabbit IgG
Antigen Region	1-30

**NAP1L1 Antibody (N-term) - Additional Information****Gene ID** 4673**Other Names**

Nucleosome assembly protein 1-like 1, NAP-1-related protein, hNRP, NAP1L1, NRP

**Target/Specificity**

This NAP1L1 antibody is generated from rabbits immunized with a KLH conjugated synthetic peptide between 1-30 amino acids from the N-terminal region of human NAP1L1.

**Dilution**

WB~~1:1000

E~~Use at an assay dependent concentration.

**Format**

Purified polyclonal antibody supplied in PBS with 0.09% (W/V) sodium azide. This antibody is prepared by Saturated Ammonium Sulfate (SAS) precipitation followed by dialysis against PBS.

**Storage**

Maintain refrigerated at 2-8°C for up to 2 weeks. For long term storage store at -20°C in small aliquots to prevent freeze-thaw cycles.

**Precautions**

NAP1L1 Antibody (N-term) is for research use only and not for use in diagnostic or therapeutic procedures.

**NAP1L1 Antibody (N-term) - Protein Information****Name** NAP1L1**Synonyms** NRP

**Function** Histone chaperone that plays a role in the nuclear import of H2A-H2B and nucleosome assembly (PubMed:[20002496](#), PubMed:[21211722](#), PubMed:[26841755](#)). Also participates in several important DNA repair mechanisms: greatly enhances ERCC6-mediated chromatin remodeling which is essential for transcription-coupled nucleotide excision DNA repair (PubMed:[28369616](#)). Also stimulates homologous recombination (HR) by RAD51 and RAD54 which is essential in mitotic DNA double strand break (DSB) repair (PubMed:[24798879](#)). Plays a key role in the regulation of embryonic neurogenesis (By similarity). Promotes the proliferation of neural progenitors and inhibits neuronal differentiation during cortical development (By similarity). Regulates neurogenesis via the modulation of RASSF10; regulates RASSF10 expression by promoting SETD1A-mediated H3K4 methylation at the RASSF10 promoter (By similarity).

#### Cellular Location

Nucleus. Melanosome. Cytoplasm. Note=Identified by mass spectrometry in melanosome fractions from stage I to stage IV

#### Tissue Location

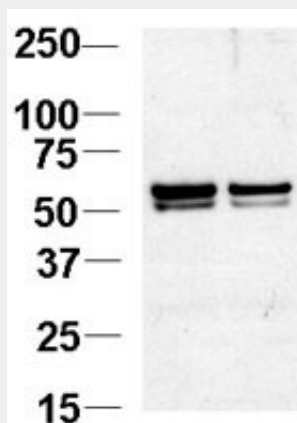
Ubiquitously expressed.

#### NAP1L1 Antibody (N-term) - Protocols

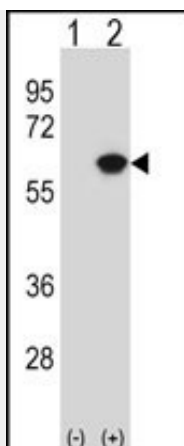
Provided below are standard protocols that you may find useful for product applications.

- [Western Blot](#)
- [Blocking Peptides](#)
- [Dot Blot](#)
- [Immunohistochemistry](#)
- [Immunofluorescence](#)
- [Immunoprecipitation](#)
- [Flow Cytometry](#)
- [Cell Culture](#)

#### NAP1L1 Antibody (N-term) - Images



Western blot analysis of NAP1L1 Antibody (N-term) (Cat.#AP1920b) in Jurkat cell lysates. NAP1L1 was detected using the purified Pab at 1:1000. Data courtesy of Guoqiang Xu, Cornell University.



Western blot analysis of NAP1L1 (arrow) using rabbit polyclonal NAP1L1 Antibody (Cat.#AP1920b). 293 cell lysates (2 ug/lane) either nontransfected (Lane 1) or transiently transfected (Lane 2) with the NAP1L1 gene.

#### **NAP1L1 Antibody (N-term) - Background**

NAP1L1 is a member of the nucleosome assembly protein (NAP) family. This protein participates in DNA replication and may play a role in modulating chromatin formation and contribute to the regulation of cell proliferation.

#### **NAP1L1 Antibody (N-term) - References**

Rehtanz, M., et al., Mol. Cell. Biol. 24(5):2153-2168 (2004).  
Simon, H.U., et al., Biochem. J. 297 (PT 2), 389-397 (1994) (): ().

#### **NAP1L1 Antibody (N-term) - Citations**

- [Using a Fluorescent PCR-capillary Gel Electrophoresis Technique to Genotype CRISPR/Cas9-mediated Knockout Mutants in a High-throughput Format.](#)
- [Global profiling of protease cleavage sites by chemoselective labeling of protein N-termini.](#)