

Mouse Sash1 Antibody (C-term)
Affinity Purified Rabbit Polyclonal Antibody (Pab)
Catalog # AP19222b

Specification

Mouse Sash1 Antibody (C-term) - Product Information

Application	WB,E
Primary Accession	P59808
Other Accession	NP_780364.3
Reactivity	Mouse
Host	Rabbit
Clonality	Polyclonal
Isotype	Rabbit IgG
Calculated MW	135591
Antigen Region	870-896

Mouse Sash1 Antibody (C-term) - Additional Information

Gene ID 70097

Other Names

SAM and SH3 domain-containing protein 1, Sash1

Target/Specificity

This Mouse Sash1 antibody is generated from rabbits immunized with a KLH conjugated synthetic peptide between 870-896 amino acids from the C-terminal region of mouse Sash1.

Dilution

WB~~1:1000

E~~Use at an assay dependent concentration.

Format

Purified polyclonal antibody supplied in PBS with 0.09% (W/V) sodium azide. This antibody is purified through a protein A column, followed by peptide affinity purification.

Storage

Maintain refrigerated at 2-8°C for up to 2 weeks. For long term storage store at -20°C in small aliquots to prevent freeze-thaw cycles.

Precautions

Mouse Sash1 Antibody (C-term) is for research use only and not for use in diagnostic or therapeutic procedures.

Mouse Sash1 Antibody (C-term) - Protein Information

Name Sash1

Function Is a positive regulator of NF-kappa-B signaling downstream of TLR4 activation. It acts as

a scaffold molecule to assemble a molecular complex that includes TRAF6, MAP3K7, CHUK and IKBKB, thereby facilitating NF-kappa-B signaling activation. Regulates TRAF6 and MAP3K7 ubiquitination. Involved in the regulation of cell mobility. Regulates lipopolysaccharide (LPS)-induced endothelial cell migration. Is involved in the regulation of skin pigmentation through the control of melanocyte migration in the epidermis.

Cellular Location

Cytoplasm {ECO:0000250|UniProtKB:O94885}.

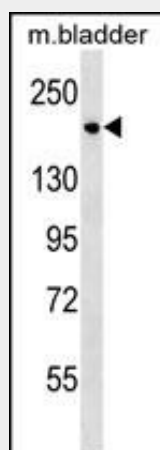
Tissue Location

Expressed in the microvascular endothelium of various organs, as well as in parenchymal cells. Expressed in the endothelium but not lymphoid cells of spleen and thymus

Mouse Sash1 Antibody (C-term) - Protocols

Provided below are standard protocols that you may find useful for product applications.

- [Western Blot](#)
- [Blocking Peptides](#)
- [Dot Blot](#)
- [Immunohistochemistry](#)
- [Immunofluorescence](#)
- [Immunoprecipitation](#)
- [Flow Cytometry](#)
- [Cell Culture](#)

Mouse Sash1 Antibody (C-term) - Images

Mouse Sash1 Antibody (C-term) (Cat. #AP19222b) western blot analysis in mouse bladder tissue lysates (35ug/lane). This demonstrates the Sash1 antibody detected the Sash1 protein (arrow).

Mouse Sash1 Antibody (C-term) - Background

Sash1 may have a role in a signaling pathway. Could act as a tumor suppressor.

Mouse Sash1 Antibody (C-term) - References

Trinidad, J.C., et al. Mol. Cell Proteomics 5(5):914-922(2006)
Lindvall, J.M., et al. Cell. Immunol. 235(1):46-55(2005)
Zambrowicz, B.P., et al. Proc. Natl. Acad. Sci. U.S.A. 100(24):14109-14114(2003)

Okazaki, N., et al. DNA Res. 10(4):167-180(2003)

Carninci, P., et al. Genome Res. 13 (6B), 1273-1289 (2003) :