

**Mouse Rad50 Antibody (C-term)**  
**Affinity Purified Rabbit Polyclonal Antibody (Pab)**  
**Catalog # AP19224b**

## Specification

---

### Mouse Rad50 Antibody (C-term) - Product Information

Application	WB,E
Primary Accession	<a href="#">P70388</a>
Reactivity	Mouse
Host	Rabbit
Clonality	Polyclonal
Isotype	Rabbit IgG
Calculated MW	153488
Antigen Region	911-938

### Mouse Rad50 Antibody (C-term) - Additional Information

#### Other Names

DNA repair protein RAD50, mRad50, 36--, Rad50

#### Target/Specificity

This Mouse Rad50 antibody is generated from rabbits immunized with a KLH conjugated synthetic peptide between 911-938 amino acids from the C-terminal region of mouse Rad50.

#### Dilution

WB~~1:1000

#### Format

Purified polyclonal antibody supplied in PBS with 0.09% (W/V) sodium azide. This antibody is purified through a protein A column, followed by peptide affinity purification.

#### Storage

Maintain refrigerated at 2-8°C for up to 2 weeks. For long term storage store at -20°C in small aliquots to prevent freeze-thaw cycles.

#### Precautions

Mouse Rad50 Antibody (C-term) is for research use only and not for use in diagnostic or therapeutic procedures.

### Mouse Rad50 Antibody (C-term) - Protein Information

#### Name Rad50

**Function** Component of the MRN complex, which plays a central role in double-strand break (DSB) repair, DNA recombination, maintenance of telomere integrity and meiosis. The complex possesses single-strand endonuclease activity and double-strand-specific 3'-5' exonuclease activity, which are provided by MRE11. RAD50 may be required to bind DNA ends and hold them in close proximity. This could facilitate searches for short or long regions of sequence homology in

the recombining DNA templates, and may also stimulate the activity of DNA ligases and/or restrict the nuclease activity of MRE11 to prevent nucleolytic degradation past a given point. The complex may also be required for DNA damage signaling via activation of the ATM kinase. In telomeres the MRN complex may modulate t-loop formation (By similarity).

#### Cellular Location

Nucleus {ECO:0000250|UniProtKB:Q92878}. Chromosome, telomere {ECO:0000250|UniProtKB:Q92878}. Chromosome {ECO:0000250|UniProtKB:Q92878}.  
Note=Localizes to discrete nuclear foci after treatment with genotoxic agents.  
{ECO:0000250|UniProtKB:Q92878}

#### Tissue Location

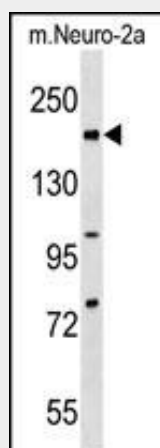
In adult, it is expressed at very low level in most tissues, except in heart, lung and aorta. Expressed at high level in testis.

### Mouse Rad50 Antibody (C-term) - Protocols

Provided below are standard protocols that you may find useful for product applications.

- [Western Blot](#)
- [Blocking Peptides](#)
- [Dot Blot](#)
- [Immunohistochemistry](#)
- [Immunofluorescence](#)
- [Immunoprecipitation](#)
- [Flow Cytometry](#)
- [Cell Culture](#)

### Mouse Rad50 Antibody (C-term) - Images



Mouse Rad50 Antibody (C-term) (Cat. #AP19224b) western blot analysis in mouse Neuro-2a cell line lysates (35ug/lane). This demonstrates the Rad50 antibody detected the Rad50 protein (arrow).

### Mouse Rad50 Antibody (C-term) - Background

Component of the MRN complex, which plays a central role in double-strand break (DSB) repair, DNA recombination, maintenance of telomere integrity and meiosis. The complex possesses single-strand endonuclease activity and double-strand-specific 3'-5' exonuclease activity, which are provided by MRE11A. RAD50 may be required to bind DNA ends and hold them in close proximity.

This could facilitate searches for short or long regions of sequence homology in the recombining DNA templates, and may also stimulate the activity of DNA ligases and/or restrict the nuclease activity of MRE11A to prevent nucleolytic degradation past a given point. The complex may also be required for DNA damage signaling via activation of the ATM kinase. In telomeres the MRN complex may modulate t-loop formation (By similarity).