

**Mouse Dcc Antibody (C-term)**  
**Affinity Purified Rabbit Polyclonal Antibody (Pab)**  
**Catalog # AP19225B**

**Specification**

---

**Mouse Dcc Antibody (C-term) - Product Information**

Application	WB,E
Primary Accession	<a href="#">P70211</a>
Other Accession	<a href="#">Q63155</a>
Reactivity	Mouse
Predicted	Rat
Host	Rabbit
Clonality	Polyclonal
Isotype	Rabbit IgG
Calculated MW	158341
Antigen Region	1391-1417

**Mouse Dcc Antibody (C-term) - Additional Information**

**Gene ID** 13176

**Other Names**

Netrin receptor DCC, Tumor suppressor protein DCC, Dcc

**Target/Specificity**

This Mouse Dcc antibody is generated from rabbits immunized with a KLH conjugated synthetic peptide between 1391-1417 amino acids from the C-terminal region of mouse Dcc.

**Dilution**

WB~~1:1000

E~~Use at an assay dependent concentration.

**Format**

Purified polyclonal antibody supplied in PBS with 0.09% (W/V) sodium azide. This antibody is purified through a protein A column, followed by peptide affinity purification.

**Storage**

Maintain refrigerated at 2-8°C for up to 2 weeks. For long term storage store at -20°C in small aliquots to prevent freeze-thaw cycles.

**Precautions**

Mouse Dcc Antibody (C-term) is for research use only and not for use in diagnostic or therapeutic procedures.

**Mouse Dcc Antibody (C-term) - Protein Information**

**Name** Dcc

**Function** Receptor for netrin required for axon guidance. Mediates axon attraction of neuronal growth cones in the developing nervous system upon ligand binding. Its association with UNC5 proteins may trigger signaling for axon repulsion. It also acts as a dependence receptor required for apoptosis induction when not associated with netrin ligand. Implicated as a tumor suppressor gene.

#### Cellular Location

Membrane; Single-pass type I membrane protein.

#### Tissue Location

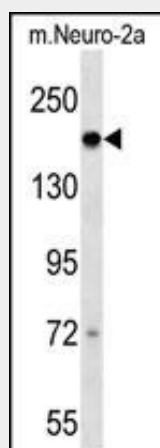
In the embryo, expressed at high levels in the developing brain and neural tube. In the embryo, expressed in developing neurons of the telencephalic cortical plate and in developing brainstem nuclei (PubMed:28250456). In adult, highly expressed in brain with very low levels found in testis, heart and thymus. Isoform C is expressed only in the embryo

### Mouse Dcc Antibody (C-term) - Protocols

Provided below are standard protocols that you may find useful for product applications.

- [Western Blot](#)
- [Blocking Peptides](#)
- [Dot Blot](#)
- [Immunohistochemistry](#)
- [Immunofluorescence](#)
- [Immunoprecipitation](#)
- [Flow Cytometry](#)
- [Cell Culture](#)

### Mouse Dcc Antibody (C-term) - Images



Mouse Dcc Antibody (C-term) (Cat. #AP19225b) western blot analysis in mouse Neuro-2a cell line lysates (35ug/lane). This demonstrates the Dcc antibody detected the Dcc protein (arrow).

### Mouse Dcc Antibody (C-term) - Background

Receptor for netrin required for axon guidance. Mediates axon attraction of neuronal growth cones in the developing nervous system upon ligand binding. Its association with UNC5 proteins may trigger signaling for axon repulsion. It also acts as a dependence receptor required for apoptosis induction when not associated with netrin ligand. Implicated as a tumor suppressor gene.