

**Mouse Cbx5 Antibody (C-term)**  
**Affinity Purified Rabbit Polyclonal Antibody (Pab)**  
**Catalog # AP19229b****Specification**

---

**Mouse Cbx5 Antibody (C-term) - Product Information**

Application	WB,E
Primary Accession	<a href="#">Q61686</a>
Other Accession	<a href="#">P45973</a> , <a href="#">NP_001070257.1</a>
Reactivity	Mouse
Predicted	Human
Host	Rabbit
Clonality	Polyclonal
Isotype	Rabbit IgG
Calculated MW	22186
Antigen Region	160-186

**Mouse Cbx5 Antibody (C-term) - Additional Information****Gene ID** 12419**Other Names**

Chromobox protein homolog 5, Heterochromatin protein 1 homolog alpha, HP1 alpha, Cbx5, Hp1a

**Target/Specificity**

This Mouse Cbx5 antibody is generated from rabbits immunized with a KLH conjugated synthetic peptide between 160-186 amino acids from the C-terminal region of mouse Cbx5.

**Dilution**

WB~~1:1000

E~~Use at an assay dependent concentration.

**Format**

Purified polyclonal antibody supplied in PBS with 0.09% (W/V) sodium azide. This antibody is purified through a protein A column, followed by peptide affinity purification.

**Storage**

Maintain refrigerated at 2-8°C for up to 2 weeks. For long term storage store at -20°C in small aliquots to prevent freeze-thaw cycles.

**Precautions**

Mouse Cbx5 Antibody (C-term) is for research use only and not for use in diagnostic or therapeutic procedures.

**Mouse Cbx5 Antibody (C-term) - Protein Information****Name** Cbx5

## Synonyms Hp1a

**Function** Component of heterochromatin that recognizes and binds histone H3 tails methylated at 'Lys-9' (H3K9me), leading to epigenetic repression. In contrast, it is excluded from chromatin when 'Tyr-41' of histone H3 is phosphorylated (H3Y41ph) (By similarity). May contribute to the association of heterochromatin with the inner nuclear membrane by interactions with the lamin-B receptor (LBR) (By similarity). Involved in the formation of kinetochore through interaction with the MIS12 complex subunit NSL1 (By similarity). Required for the formation of the inner centromere (By similarity).

## Cellular Location

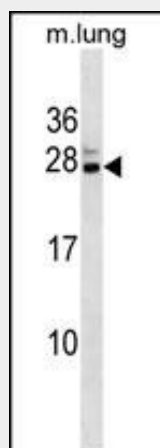
Nucleus {ECO:0000250|UniProtKB:P45973}. Chromosome {ECO:0000250|UniProtKB:P45973}. Chromosome, centromere {ECO:0000250|UniProtKB:P45973}. Note=Colocalizes with HNRNPU in the nucleus (By similarity). Component of centromeric and pericentromeric heterochromatin. Associates with chromosomes during mitosis. Associates specifically with chromatin during metaphase and anaphase. Localizes to sites of DNA damage. {ECO:0000250|UniProtKB:P45973}

## Mouse Cbx5 Antibody (C-term) - Protocols

Provided below are standard protocols that you may find useful for product applications.

- [Western Blot](#)
- [Blocking Peptides](#)
- [Dot Blot](#)
- [Immunohistochemistry](#)
- [Immunofluorescence](#)
- [Immunoprecipitation](#)
- [Flow Cytometry](#)
- [Cell Culture](#)

## Mouse Cbx5 Antibody (C-term) - Images



Mouse Cbx5 Antibody (C-term) (Cat. #AP19229b) western blot analysis in mouse lung tissue lysates (35ug/lane). This demonstrates the Cbx5 antibody detected the Cbx5 protein (arrow).

## Mouse Cbx5 Antibody (C-term) - Background

Component of heterochromatin that recognizes and binds histone H3 tails methylated at 'Lys-9' (H3K9me), leading to epigenetic repression. In contrast, it is excluded from chromatin when 'Tyr-41' of histone H3 is phosphorylated (H3Y41ph). Can interact with lamin-B receptor (LBR). This

interaction can contribute to the association of the heterochromatin with the inner nuclear membrane. Involved in the formation of functional kinetochore through interaction with MIS12 complex proteins (By similarity).

#### **Mouse Cbx5 Antibody (C-term) - References**

Sun, Y., et al. Biophys. J. 99(4):1274-1283(2010)  
Muller, K.P., et al. Biophys. J. 97(11):2876-2885(2009)  
Dong, K.B., et al. EMBO J. 27(20):2691-2701(2008)  
Villeneuve, L.M., et al. Proc. Natl. Acad. Sci. U.S.A. 105(26):9047-9052(2008)  
Brancorsini, S., et al. Cell Cycle 7(10):1415-1422(2008)