

**EPB41L5 Antibody (Center)**  
**Affinity Purified Rabbit Polyclonal Antibody (Pab)**  
**Catalog # AP19235c****Specification**

---

**EPB41L5 Antibody (Center) - Product Information**

Application	WB,E
Primary Accession	<a href="#">O9HCM4</a>
Other Accession	<a href="#">O8BGS1</a> , <a href="#">NP_065960.2</a>
Reactivity	Human
Predicted	Mouse
Host	Rabbit
Clonality	Polyclonal
Isotype	Rabbit IgG
Calculated MW	81856
Antigen Region	355-383

**EPB41L5 Antibody (Center) - Additional Information****Gene ID** 57669**Other Names**

Band 41-like protein 5, EPB41L5, KIAA1548

**Target/Specificity**

This EPB41L5 antibody is generated from rabbits immunized with a KLH conjugated synthetic peptide between 355-383 amino acids from the Central region of human EPB41L5.

**Dilution**

WB~~1:1000

E~~Use at an assay dependent concentration.

**Format**

Purified polyclonal antibody supplied in PBS with 0.09% (W/V) sodium azide. This antibody is purified through a protein A column, followed by peptide affinity purification.

**Storage**

Maintain refrigerated at 2-8°C for up to 2 weeks. For long term storage store at -20°C in small aliquots to prevent freeze-thaw cycles.

**Precautions**

EPB41L5 Antibody (Center) is for research use only and not for use in diagnostic or therapeutic procedures.

**EPB41L5 Antibody (Center) - Protein Information****Name** EPB41L5

**Synonyms** KIAA1548

**Function** Plays a role in the formation and organization of tight junctions during the establishment of polarity in epithelial cells.

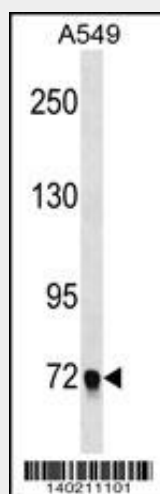
**Cellular Location**

Cytoplasm {ECO:0000250|UniProtKB:Q8BGS1}. Cell junction, adherens junction {ECO:0000250|UniProtKB:Q8BGS1}. Cell membrane {ECO:0000250|UniProtKB:Q8BGS1}; Peripheral membrane protein. Photoreceptor inner segment {ECO:0000250|UniProtKB:Q5FVG2}

**EPB41L5 Antibody (Center) - Protocols**

Provided below are standard protocols that you may find useful for product applications.

- [Western Blot](#)
- [Blocking Peptides](#)
- [Dot Blot](#)
- [Immunohistochemistry](#)
- [Immunofluorescence](#)
- [Immunoprecipitation](#)
- [Flow Cytometry](#)
- [Cell Culture](#)

**EPB41L5 Antibody (Center) - Images**

EPB41L5 Antibody (Center) (Cat. #AP19235c) western blot analysis in A549 cell line lysates (35ug/lane). This demonstrates the EPB41L5 antibody detected the EPB41L5 protein (arrow).

**EPB41L5 Antibody (Center) - Background**

EPB41L5 may contribute to the correct positioning of tight junctions during the establishment of polarity in epithelial cells.

**EPB41L5 Antibody (Center) - References**

Gosens, I., et al. Exp. Cell Res. 313(19):3959-3970(2007)