

**Mouse Shb Antibody (C-term)**  
**Affinity Purified Rabbit Polyclonal Antibody (Pab)**  
**Catalog # AP19244b****Specification**

---

**Mouse Shb Antibody (C-term) - Product Information**

Application	WB,E
Primary Accession	<a href="#">Q6PD21</a>
Other Accession	<a href="#">Q15464</a> , <a href="#">NP_001028478.1</a>
Reactivity	Mouse
Predicted	Human
Host	Rabbit
Clonality	Polyclonal
Isotype	Rabbit IgG
Calculated MW	54708
Antigen Region	68-95

**Mouse Shb Antibody (C-term) - Additional Information****Gene ID** 230126**Other Names**

SH2 domain-containing adapter protein B, Shb

**Target/Specificity**

This Mouse Shb antibody is generated from rabbits immunized with a KLH conjugated synthetic peptide between 68-95 amino acids from the C-terminal region of mouse Shb.

**Dilution**

WB~~1:1000

E~~Use at an assay dependent concentration.

**Format**

Purified polyclonal antibody supplied in PBS with 0.09% (W/V) sodium azide. This antibody is purified through a protein A column, followed by peptide affinity purification.

**Storage**

Maintain refrigerated at 2-8°C for up to 2 weeks. For long term storage store at -20°C in small aliquots to prevent freeze-thaw cycles.

**Precautions**

Mouse Shb Antibody (C-term) is for research use only and not for use in diagnostic or therapeutic procedures.

**Mouse Shb Antibody (C-term) - Protein Information****Name** Shb

**Function** Adapter protein which regulates several signal transduction cascades by linking activated receptors to downstream signaling components. May play a role in angiogenesis by regulating FGFR1, VEGFR2 and PDGFR signaling. May also play a role in T-cell antigen receptor/TCR signaling, interleukin-2 signaling, apoptosis and neuronal cells differentiation by mediating basic-FGF and NGF-induced signaling cascades. May also regulate IRS1 and IRS2 signaling in insulin- producing cells (By similarity).

**Cellular Location**

Cytoplasm. Cell membrane; Peripheral membrane protein; Cytoplasmic side. Note=Associates with membrane lipid rafts upon TCR stimulation.

**Tissue Location**

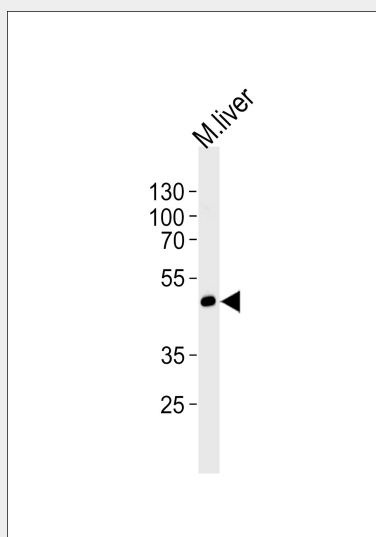
Expressed in heart, liver, brain and kidney (at protein level).

**Mouse Shb Antibody (C-term) - Protocols**

Provided below are standard protocols that you may find useful for product applications.

- [Western Blot](#)
- [Blocking Peptides](#)
- [Dot Blot](#)
- [Immunohistochemistry](#)
- [Immunofluorescence](#)
- [Immunoprecipitation](#)
- [Flow Cytometry](#)
- [Cell Culture](#)

**Mouse Shb Antibody (C-term) - Images**



Western blot analysis of lysate from mouse liver tissue lysate, using Mouse Shb Antibody (C-term)(Cat. #AP19244b). AP19244b was diluted at 1:1000 at each lane. A goat anti-rabbit IgG H&L(HRP) at 1:5000 dilution was used as the secondary antibody. Lysate at 35ug per lane.

**Mouse Shb Antibody (C-term) - Background**

Adapter protein which regulates several signal transduction cascades by linking activated receptors to downstream signaling components. May play a role in angiogenesis by regulating

FGFR1, VEGFR2 and PDGFR signaling. May also play a role in T-cell antigen receptor/TCR signaling, interleukin-2 signaling, apoptosis and neuronal cells differentiation by mediating basic-FGF and NGF-induced signaling cascades. May also regulate IRS1 and IRS2 signaling in insulin-producing cells (By similarity).

#### **Mouse Shb Antibody (C-term) - References**

Calounova, G., et al. PLoS ONE 5 (6), E11155 (2010) :  
Akerblom, B., et al. J. Endocrinol. 203(2):271-279(2009)  
Mokhtari, D., et al. Biochem. Biophys. Res. Commun. 387(3):553-557(2009)  
Funa, N.S., et al. Cancer Res. 69(5):2141-2148(2009)  
Funa, N.S., et al. Differentiation 76(5):443-453(2008)