

NUP54 Antibody (Center)
Purified Rabbit Polyclonal Antibody (Pab)
Catalog # AP1924b**Specification**

NUP54 Antibody (Center) - Product Information

Application	WB,E
Primary Accession	Q7Z3B4
Reactivity	Human
Host	Rabbit
Clonality	Polyclonal
Isotype	Rabbit IgG
Calculated MW	55435
Antigen Region	211-243

NUP54 Antibody (Center) - Additional Information**Gene ID** 53371**Other Names**

Nucleoporin p54, 54 kDa nucleoporin, NUP54

Target/Specificity

This NUP54 antibody is generated from rabbits immunized with a KLH conjugated synthetic peptide between 211-243 amino acids from the Central region of human NUP54.

Dilution

WB~~1:1000

E~~Use at an assay dependent concentration.

Format

Purified polyclonal antibody supplied in PBS with 0.09% (W/V) sodium azide. This antibody is prepared by Saturated Ammonium Sulfate (SAS) precipitation followed by dialysis against PBS.

Storage

Maintain refrigerated at 2-8°C for up to 2 weeks. For long term storage store at -20°C in small aliquots to prevent freeze-thaw cycles.

Precautions

NUP54 Antibody (Center) is for research use only and not for use in diagnostic or therapeutic procedures.

NUP54 Antibody (Center) - Protein Information**Name** NUP54

Function Component of the nuclear pore complex, a complex required for the trafficking across the nuclear membrane.

Cellular Location

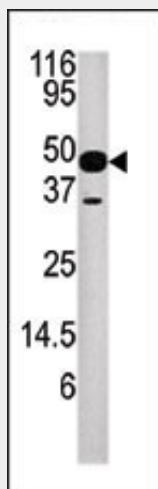
Nucleus, nuclear pore complex {ECO:0000250|UniProtKB:P70582}. Nucleus membrane {ECO:0000250|UniProtKB:P70582}; Peripheral membrane protein {ECO:0000250|UniProtKB:P70582}; Cytoplasmic side {ECO:0000250|UniProtKB:P70582}. Nucleus membrane {ECO:0000250|UniProtKB:P70582}; Peripheral membrane protein {ECO:0000250|UniProtKB:P70582}; Nucleoplasmic side {ECO:0000250|UniProtKB:P70582}. Note=Biased towards cytoplasmic side Central region of the nuclear pore complex, within the transporter {ECO:0000250|UniProtKB:P70582}

NUP54 Antibody (Center) - Protocols

Provided below are standard protocols that you may find useful for product applications.

- [Western Blot](#)
- [Blocking Peptides](#)
- [Dot Blot](#)
- [Immunohistochemistry](#)
- [Immunofluorescence](#)
- [Immunoprecipitation](#)
- [Flow Cytometry](#)
- [Cell Culture](#)

NUP54 Antibody (Center) - Images



Western blot analysis of anti-NUP54 Pab (Cat. #AP1924b) in mouse heart tissue lysate. NUP54 (arrow) was detected using the purified Pab.

NUP54 Antibody (Center) - Background

The nuclear envelope creates distinct nuclear and cytoplasmic compartments in eukaryotic cells. It consists of two concentric membranes perforated by nuclear pores, large protein complexes that form aqueous channels to regulate the flow of macromolecules between the nucleus and the cytoplasm. These complexes are composed of at least 100 different polypeptide subunits, many of which belong to the nucleoporin family. NUP54 is a member of the phe-gly (FG) repeat-containing nucleoporin subset.

NUP54 Antibody (Center) - References

Stoffler, D., et al., Curr. Opin. Cell Biol. 11(3):391-401 (1999).

Bodoor, K., et al., Biochem. Cell Biol. 77(4):321-329 (1999).
Popov, S., et al., J. Biol. Chem. 273(21):13347-13352 (1998).
Hu, T., et al., J. Cell Biol. 134(3):589-601 (1996).
Finlay, D.R., et al., J. Cell Biol. 114(1):169-183 (1991).