

CACNG1 Antibody (C-term)
Affinity Purified Rabbit Polyclonal Antibody (Pab)
Catalog # AP19272B

Specification

CACNG1 Antibody (C-term) - Product Information

Application	WB,E
Primary Accession	Q06432
Other Accession	P97707 , P19518 , Q2MJQ7 , O70578 , NP_000718.1
Reactivity	Mouse
Predicted	Pig, Rabbit, Rat
Host	Rabbit
Clonality	Polyclonal
Isotype	Rabbit IgG
Calculated MW	25028
Antigen Region	144-172

CACNG1 Antibody (C-term) - Additional Information

Gene ID 786

Other Names

Voltage-dependent calcium channel gamma-1 subunit, Dihydropyridine-sensitive L-type, skeletal muscle calcium channel subunit gamma, CACNG1, CACNLG

Target/Specificity

This CACNG1 antibody is generated from rabbits immunized with a KLH conjugated synthetic peptide between 144-172 amino acids from the C-terminal region of human CACNG1.

Dilution

WB~~1:1000

E~~Use at an assay dependent concentration.

Format

Purified polyclonal antibody supplied in PBS with 0.09% (W/V) sodium azide. This antibody is purified through a protein A column, followed by peptide affinity purification.

Storage

Maintain refrigerated at 2-8°C for up to 2 weeks. For long term storage store at -20°C in small aliquots to prevent freeze-thaw cycles.

Precautions

CACNG1 Antibody (C-term) is for research use only and not for use in diagnostic or therapeutic procedures.

CACNG1 Antibody (C-term) - Protein Information

Name CACNG1

Function Regulatory subunit of the voltage-gated calcium channel that gives rise to L-type calcium currents in skeletal muscle. Regulates channel inactivation kinetics.

Cellular Location

Cell membrane, sarcolemma {ECO:0000250|UniProtKB:P19518}; Multi-pass membrane protein {ECO:0000250|UniProtKB:P19518}

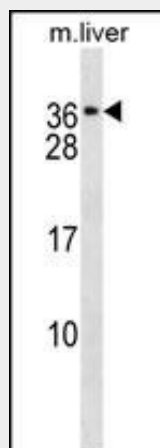
Tissue Location

Skeletal muscle..

CACNG1 Antibody (C-term) - Protocols

Provided below are standard protocols that you may find useful for product applications.

- [Western Blot](#)
- [Blocking Peptides](#)
- [Dot Blot](#)
- [Immunohistochemistry](#)
- [Immunofluorescence](#)
- [Immunoprecipitation](#)
- [Flow Cytometry](#)
- [Cell Culture](#)

CACNG1 Antibody (C-term) - Images

CACNG1 Antibody (C-term)(Cat. #AP19272b) western blot analysis in mouse liver tissue lysates (35ug/lane). This demonstrates the CACNG1 antibody detected the CACNG1 protein (arrow).

CACNG1 Antibody (C-term) - Background

Voltage-dependent calcium channels are composed of five subunits. The protein encoded by this gene represents one of these subunits, gamma, and is one of two known gamma subunit proteins. This particular gamma subunit is part of skeletal muscle 1,4-dihydropyridine-sensitive calcium channels and is an integral membrane protein that plays a role in excitation-contraction coupling. This gene is part of a functionally diverse eight-member protein subfamily of the PMP-22/EMP/MP20 family and is located in a

cluster with two family members that function as transmembrane AMPA receptor regulatory proteins (TARPs).

CACNG1 Antibody (C-term) - References

Chen, R.S., et al. Cell Biochem. Biophys. 47(2):178-186(2007)
Chu, P.J., et al. Gene 280 (1-2), 37-48 (2001) :
Burgess, D.L., et al. Genomics 71(3):339-350(2001)
Burgess, D.L., et al. Genome Res. 9(12):1204-1213(1999)
Wagner, T., et al. Cytogenet. Cell Genet. 76 (3-4), 172-175 (1997) :