

ARHGEF33 Antibody (C-term)
Affinity Purified Rabbit Polyclonal Antibody (Pab)
Catalog # AP19276B

Specification

ARHGEF33 Antibody (C-term) - Product Information

Application	WB,E
Primary Accession	A8MVX0
Reactivity	Human
Host	Rabbit
Clonality	Polyclonal
Isotype	Rabbit IgG
Calculated MW	94633
Antigen Region	753-780

ARHGEF33 Antibody (C-term) - Additional Information

Gene ID 100271715

Other Names

Rho guanine nucleotide exchange factor 33, ARHGEF33

Target/Specificity

This ARHGEF33 antibody is generated from rabbits immunized with a KLH conjugated synthetic peptide between 753-780 amino acids from the C-terminal region of human ARHGEF33.

Dilution

WB~~1:1000

Format

Purified polyclonal antibody supplied in PBS with 0.09% (W/V) sodium azide. This antibody is purified through a protein A column, followed by peptide affinity purification.

Storage

Maintain refrigerated at 2-8°C for up to 2 weeks. For long term storage store at -20°C in small aliquots to prevent freeze-thaw cycles.

Precautions

ARHGEF33 Antibody (C-term) is for research use only and not for use in diagnostic or therapeutic procedures.

ARHGEF33 Antibody (C-term) - Protein Information

Name ARHGEF33

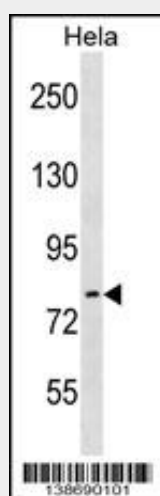
Function May act as a guanine-nucleotide releasing factor.

ARHGEF33 Antibody (C-term) - Protocols

Provided below are standard protocols that you may find useful for product applications.

- [Western Blot](#)
- [Blocking Peptides](#)
- [Dot Blot](#)
- [Immunohistochemistry](#)
- [Immunofluorescence](#)
- [Immunoprecipitation](#)
- [Flow Cytometry](#)
- [Cell Culture](#)

ARHGEF33 Antibody (C-term) - Images



ARHGEF33 Antibody (C-term)(Cat. #AP19276b) western blot analysis in HeLa cell line lysates (35ug/lane). This demonstrates the ARHGEF33 antibody detected the ARHGEF33 protein (arrow).

ARHGEF33 Antibody (C-term) - Background

ARHGEF33 may act as a guanine-nucleotide releasing factor (By similarity).