

**MGT4L Antibody (Center)**  
**Affinity Purified Rabbit Polyclonal Antibody (Pab)**  
**Catalog # AP19277c**

**Specification**

---

**MGT4L Antibody (Center) - Product Information**

Application	WB,E
Primary Accession	<a href="#">Q49A09</a>
Reactivity	Human
Host	Rabbit
Clonality	Polyclonal
Isotype	Rabbit IgG
Antigen Region	56-82

**MGT4L Antibody (Center) - Additional Information**

**Other Names**

Alpha-1, 3-mannosyl-glycoprotein 4-beta-N-acetylglucosaminyltransferase-like protein LOC641515

**Target/Specificity**

This MGT4L antibody is generated from rabbits immunized with a KLH conjugated synthetic peptide between 56-82 amino acids from the Central region of human MGT4L.

**Dilution**

WB~~1:1000

E~~Use at an assay dependent concentration.

**Format**

Purified polyclonal antibody supplied in PBS with 0.09% (W/V) sodium azide. This antibody is purified through a protein A column, followed by peptide affinity purification.

**Storage**

Maintain refrigerated at 2-8°C for up to 2 weeks. For long term storage store at -20°C in small aliquots to prevent freeze-thaw cycles.

**Precautions**

MGT4L Antibody (Center) is for research use only and not for use in diagnostic or therapeutic procedures.

**MGT4L Antibody (Center) - Protein Information**

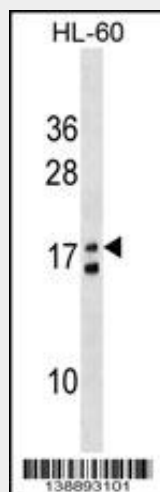
**MGT4L Antibody (Center) - Protocols**

Provided below are standard protocols that you may find useful for product applications.

- [Western Blot](#)

- [Blocking Peptides](#)
- [Dot Blot](#)
- [Immunohistochemistry](#)
- [Immunofluorescence](#)
- [Immunoprecipitation](#)
- [Flow Cytometry](#)
- [Cell Culture](#)

#### **MGT4L Antibody (Center) - Images**



MGT4L Antibody (Center)(Cat. #AP19277c) western blot analysis in HL-60 cell line lysates (35ug/lane). This demonstrates the MGT4L antibody detected the MGT4L protein (arrow).

#### **MGT4L Antibody (Center) - Background**

The function of this protein remains unknown.