

MIXL1 Antibody (Center)
Affinity Purified Rabbit Polyclonal Antibody (Pab)
Catalog # AP19284c**Specification**

MIXL1 Antibody (Center) - Product Information

Application	WB,E
Primary Accession	O9H2W2
Other Accession	O9WUI0 , NP_114150.1
Reactivity	Mouse
Host	Rabbit
Clonality	Polyclonal
Isotype	Rabbit IgG
Calculated MW	24659
Antigen Region	122-151

MIXL1 Antibody (Center) - Additional Information**Gene ID** 83881**Other Names**

Homeobox protein MIXL1, Homeodomain protein MIX, hMix, MIX1 homeobox-like protein 1, Mix1 homeobox-like protein, MIXL1, MIXL

Target/Specificity

This MIXL1 antibody is generated from rabbits immunized with a KLH conjugated synthetic peptide between 122-151 amino acids from the Central region of human MIXL1.

Dilution

WB~~1:1000

E~~Use at an assay dependent concentration.

Format

Purified polyclonal antibody supplied in PBS with 0.09% (W/V) sodium azide. This antibody is purified through a protein A column, followed by peptide affinity purification.

Storage

Maintain refrigerated at 2-8°C for up to 2 weeks. For long term storage store at -20°C in small aliquots to prevent freeze-thaw cycles.

Precautions

MIXL1 Antibody (Center) is for research use only and not for use in diagnostic or therapeutic procedures.

MIXL1 Antibody (Center) - Protein Information**Name** MIXL1

Synonyms MIXL

Function Transcription factor that play a central role in proper axial mesendoderm morphogenesis and endoderm formation. Required for efficient differentiation of cells from the primitive streak stage to blood, by acting early in the recruitment and/or expansion of mesodermal progenitors to the hemangioblastic and hematopoietic lineages. Also involved in the morphogenesis of the heart and the gut during embryogenesis. Acts as a negative regulator of brachyury expression (By similarity).

Cellular Location

Nucleus {ECO:0000255|PROSITE-ProRule:PRU00108, ECO:0000269|PubMed:12070013, ECO:0000269|PubMed:17303500}

Tissue Location

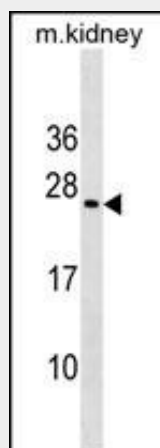
Restricted to progenitors and secondary lymph tissues. In normal hematopoiesis, it is restricted to immature B- and T-lymphoid cells. Present in differentiating embryonic stem cells (at protein level).

MIXL1 Antibody (Center) - Protocols

Provided below are standard protocols that you may find useful for product applications.

- [Western Blot](#)
- [Blocking Peptides](#)
- [Dot Blot](#)
- [Immunohistochemistry](#)
- [Immunofluorescence](#)
- [Immunoprecipitation](#)
- [Flow Cytometry](#)
- [Cell Culture](#)

MIXL1 Antibody (Center) - Images



MIXL1 Antibody (Center)(Cat. #AP19284c) western blot analysis in mouse kidney tissue lysates (35ug/lane). This demonstrates the MIXL1 antibody detected the MIXL1 protein (arrow).

MIXL1 Antibody (Center) - Background

Homeodomain proteins, such as MIXL1, are transcription factors that regulate cell fate during development (Hart et al.,

2005 [PubMed 15982639]).

MIXL1 Antibody (Center) - References

Davis, R.P., et al. Blood 111(4):1876-1884(2008)
Drakos, E., et al. Hum. Pathol. 38(3):500-507(2007)
Hart, A.H., et al. Biochem. Biophys. Res. Commun. 333(4):1361-1369(2005)
Guo, W., et al. Blood 100(1):89-95(2002)
Sahr, K., et al. Gene 291 (1-2), 135-147 (2002) :