

PMF1 Antibody (Center)
Affinity Purified Rabbit Polyclonal Antibody (Pab)
Catalog # AP19290c

Specification

PMF1 Antibody (Center) - Product Information

Application	WB,E
Primary Accession	Q6P1K2
Other Accession	NP_009152.2
Reactivity	Human
Host	Rabbit
Clonality	Polyclonal
Isotype	Rabbit IgG
Calculated MW	23339
Antigen Region	109-135

PMF1 Antibody (Center) - Additional Information

Gene ID 100527963;11243

Other Names

Polyamine-modulated factor 1, PMF-1, PMF1 {ECO:0000312|EMBL:AAH650311}

Target/Specificity

This PMF1 antibody is generated from rabbits immunized with a KLH conjugated synthetic peptide between 109-135 amino acids from the Central region of human PMF1.

Dilution

WB~~1:1000

Format

Purified polyclonal antibody supplied in PBS with 0.09% (W/V) sodium azide. This antibody is purified through a protein A column, followed by peptide affinity purification.

Storage

Maintain refrigerated at 2-8°C for up to 2 weeks. For long term storage store at -20°C in small aliquots to prevent freeze-thaw cycles.

Precautions

PMF1 Antibody (Center) is for research use only and not for use in diagnostic or therapeutic procedures.

PMF1 Antibody (Center) - Protein Information

Name PMF1 {ECO:0000312|EMBL:AAH65031.1}

Function Part of the MIS12 complex which is required for normal chromosome alignment and segregation and kinetochore formation during mitosis. May act as a cotranscription partner of

NFE2L2 involved in regulation of polyamine-induced transcription of SSAT.

Cellular Location

Nucleus. Chromosome, centromere, kinetochore Note=Associated with the kinetochore

Tissue Location

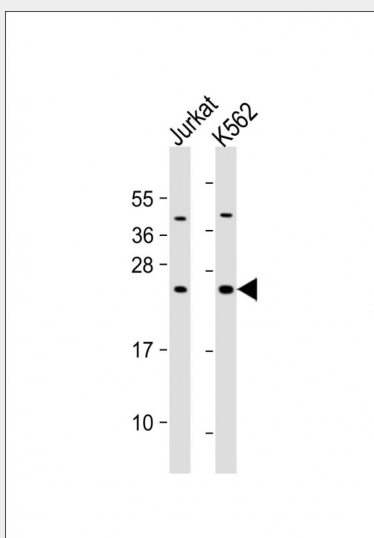
Highest levels of expression in heart and skeletal muscle, with significant levels expressed in kidney and liver

PMF1 Antibody (Center) - Protocols

Provided below are standard protocols that you may find useful for product applications.

- [Western Blot](#)
- [Blocking Peptides](#)
- [Dot Blot](#)
- [Immunohistochemistry](#)
- [Immunofluorescence](#)
- [Immunoprecipitation](#)
- [Flow Cytometry](#)
- [Cell Culture](#)

PMF1 Antibody (Center) - Images



All lanes : Anti-PMF1 Antibody (Center) at 1:1000 dilution Lane 1: Jurkat whole cell lysate Lane 2: K562 whole cell lysate Lysates/proteins at 20 µg per lane. Secondary Goat Anti-Rabbit IgG, (H+L), Peroxidase conjugated at 1/10000 dilution. Predicted band size : 23 kDa Blocking/Dilution buffer: 5% NFD/MTBST.

PMF1 Antibody (Center) - Background

Part of the MIS12 complex which is required for normal chromosome alignment and segregation and kinetochore formation during mitosis. May act as a cotranscription partner of NFE2L2 involved in regulation of polyamine-induced transcription of SSAT.

PMF1 Antibody (Center) - References

Aleman, A., et al. Clin. Cancer Res. 14(24):8236-8243(2008)
Kline, S.L., et al. J. Cell Biol. 173(1):9-17(2006)
Obuse, C., et al. Nat. Cell Biol. 6(11):1135-1141(2004)
Wang, Y., et al. Biochem. J. 366 (PT 1), 79-86 (2002) :
Wang, Y., et al. Biochem. J. 355 (PT 1), 45-49 (2001) :