

RHPN2 Antibody (Center)
Affinity Purified Rabbit Polyclonal Antibody (Pab)
Catalog # AP19291C**Specification**

RHPN2 Antibody (Center) - Product Information

Application	WB,E
Primary Accession	Q8IUC4
Other Accession	NP_149094.3
Reactivity	Human
Host	Rabbit
Clonality	Polyclonal
Isotype	Rabbit IgG
Calculated MW	76993
Antigen Region	352-380

RHPN2 Antibody (Center) - Additional Information**Gene ID** 85415**Other Names**

Rhopilin-2, 76 kDa RhoB effector protein, GTP-Rho-binding protein 2, p76RBE, RHPN2

Target/Specificity

This RHPN2 antibody is generated from rabbits immunized with a KLH conjugated synthetic peptide between 352-380 amino acids from the Central region of human RHPN2.

Dilution

WB~~1:1000

E~~Use at an assay dependent concentration.

Format

Purified polyclonal antibody supplied in PBS with 0.09% (W/V) sodium azide. This antibody is purified through a protein A column, followed by peptide affinity purification.

Storage

Maintain refrigerated at 2-8°C for up to 2 weeks. For long term storage store at -20°C in small aliquots to prevent freeze-thaw cycles.

Precautions

RHPN2 Antibody (Center) is for research use only and not for use in diagnostic or therapeutic procedures.

RHPN2 Antibody (Center) - Protein Information**Name** RHPN2**Function** Binds specifically to GTP-Rho. May function in a Rho pathway to limit stress fiber

formation and/or increase the turnover of F-actin structures in the absence of high levels of RhoA activity.

Cellular Location

Cytoplasm, perinuclear region

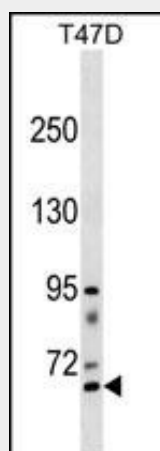
Tissue Location

Widely expressed. Highly expressed in prostate, trachea, stomach, colon, thyroid and pancreas. Expressed at lower level in brain, spinal cord, kidney, placenta and liver

RHPN2 Antibody (Center) - Protocols

Provided below are standard protocols that you may find useful for product applications.

- [Western Blot](#)
- [Blocking Peptides](#)
- [Dot Blot](#)
- [Immunohistochemistry](#)
- [Immunofluorescence](#)
- [Immunoprecipitation](#)
- [Flow Cytometry](#)
- [Cell Culture](#)

RHPN2 Antibody (Center) - Images

RHPN2 Antibody (Center)(Cat. #AP19291c) western blot analysis in T47D cell line lysates (35ug/lane). This demonstrates the RHPN2 antibody detected the RHPN2 protein (arrow).

RHPN2 Antibody (Center) - Background

This gene encodes a member of the rhopilin family of Ras-homologous (Rho)-GTPase binding proteins. The encoded protein binds both GTP- and GDP-bound RhoA and GTP-bound RhoB and may be involved in the organization of the actin cytoskeleton. [provided by RefSeq].

RHPN2 Antibody (Center) - References

Abuli, A., et al. Gastroenterology 139(3):788-796(2010)
von Holst, S., et al. Br. J. Cancer 103(4):575-580(2010)

Kupfer, S.S., et al. Gastroenterology (2010) In press :
Xiong, F., et al. Cancer Epidemiol. Biomarkers Prev. 19(7):1855-1861(2010)
Hawken, S.J., et al. Hum. Genet. 128(1):89-101(2010)