

RNF223 Antibody (Center)
Affinity Purified Rabbit Polyclonal Antibody (Pab)
Catalog # AP19292C**Specification**

RNF223 Antibody (Center) - Product Information

Application	WB,E
Primary Accession	E7ERA6
Other Accession	NP_001192181.1
Reactivity	Human
Host	Rabbit
Clonality	Polyclonal
Isotype	Rabbit IgG
Calculated MW	26629
Antigen Region	108-134

RNF223 Antibody (Center) - Additional Information**Gene ID** 401934**Other Names**

RING finger protein 223, RNF223

Target/Specificity

This RNF223 antibody is generated from rabbits immunized with a KLH conjugated synthetic peptide between 108-134 amino acids from the Central region of human RNF223.

Dilution

WB~~1:1000

Format

Purified polyclonal antibody supplied in PBS with 0.09% (W/V) sodium azide. This antibody is purified through a protein A column, followed by peptide affinity purification.

Storage

Maintain refrigerated at 2-8°C for up to 2 weeks. For long term storage store at -20°C in small aliquots to prevent freeze-thaw cycles.

Precautions

RNF223 Antibody (Center) is for research use only and not for use in diagnostic or therapeutic procedures.

RNF223 Antibody (Center) - Protein Information**Name** RNF223**Cellular Location**

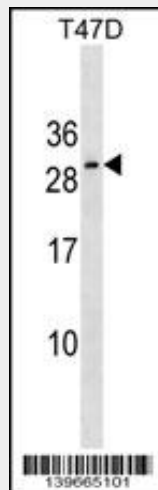
Membrane; Single-pass membrane protein

RNF223 Antibody (Center) - Protocols

Provided below are standard protocols that you may find useful for product applications.

- [Western Blot](#)
- [Blocking Peptides](#)
- [Dot Blot](#)
- [Immunohistochemistry](#)
- [Immunofluorescence](#)
- [Immunoprecipitation](#)
- [Flow Cytometry](#)
- [Cell Culture](#)

RNF223 Antibody (Center) - Images



RNF223 Antibody (Center)(Cat. #AP19292c) western blot analysis in T47D cell line lysates (35ug/lane). This demonstrates the RNF223 antibody detected the RNF223 protein (arrow).

RNF223 Antibody (Center) - Background

The function of this protein remains unknown.