

**OR6B2 Antibody (C-term)**  
**Affinity Purified Rabbit Polyclonal Antibody (Pab)**  
**Catalog # AP19297b**

**Specification**

---

**OR6B2 Antibody (C-term) - Product Information**

Application	WB,E
Primary Accession	<a href="#">Q6IFH4</a>
Other Accession	<a href="#">NP_001005853.1</a>
Reactivity	Human
Host	Rabbit
Clonality	Polyclonal
Isotype	Rabbit IgG
Calculated MW	35029
Antigen Region	278-304

**OR6B2 Antibody (C-term) - Additional Information**

**Gene ID** 389090

**Other Names**

Olfactory receptor 6B2, Olfactory receptor OR2-1, OR6B2, OR6B2P

**Target/Specificity**

This OR6B2 antibody is generated from rabbits immunized with a KLH conjugated synthetic peptide between 278-304 amino acids from the C-terminal region of human OR6B2.

**Dilution**

WB~~1:1000

E~~Use at an assay dependent concentration.

**Format**

Purified polyclonal antibody supplied in PBS with 0.09% (W/V) sodium azide. This antibody is purified through a protein A column, followed by peptide affinity purification.

**Storage**

Maintain refrigerated at 2-8°C for up to 2 weeks. For long term storage store at -20°C in small aliquots to prevent freeze-thaw cycles.

**Precautions**

OR6B2 Antibody (C-term) is for research use only and not for use in diagnostic or therapeutic procedures.

**OR6B2 Antibody (C-term) - Protein Information**

**Name** OR6B2

**Synonyms** OR6B2P

**Function** Odorant receptor.

**Cellular Location**

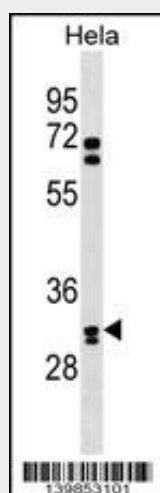
Cell membrane; Multi-pass membrane protein.

**OR6B2 Antibody (C-term) - Protocols**

Provided below are standard protocols that you may find useful for product applications.

- [Western Blot](#)
- [Blocking Peptides](#)
- [Dot Blot](#)
- [Immunohistochemistry](#)
- [Immunofluorescence](#)
- [Immunoprecipitation](#)
- [Flow Cytometry](#)
- [Cell Culture](#)

**OR6B2 Antibody (C-term) - Images**



OR6B2 Antibody (C-term)(Cat. #AP19297b) western blot analysis in HeLa cell line lysates (35ug/lane). This demonstrates the OR6B2 antibody detected the OR6B2 protein (arrow).

**OR6B2 Antibody (C-term) - Background**

Olfactory receptors interact with odorant molecules in the nose, to initiate a neuronal response that triggers the perception of a smell. The olfactory receptor proteins are members of a large family of G-protein-coupled receptors (GPCR) arising from single coding-exon genes. Olfactory receptors share a 7-transmembrane domain structure with many neurotransmitter and hormone receptors and are responsible for the recognition and G protein-mediated transduction of odorant signals. The olfactory receptor gene family is the largest in the genome. The nomenclature assigned to the olfactory receptor genes and proteins for this organism is independent of other organisms.

**OR6B2 Antibody (C-term) - References**

Malnic, B., et al. Proc. Natl. Acad. Sci. U.S.A. 101(8):2584-2589(2004)