

SEPT12 Antibody (Center)
Affinity Purified Rabbit Polyclonal Antibody (Pab)
Catalog # AP19298c**Specification**

SEPT12 Antibody (Center) - Product Information

Application	WB,E
Primary Accession	Q8IYM1
Other Accession	NP_001147930.1
Reactivity	Human
Host	Rabbit
Clonality	Polyclonal
Isotype	Rabbit IgG
Calculated MW	40748
Antigen Region	218-244

SEPT12 Antibody (Center) - Additional Information**Gene ID** 124404**Other Names**

Septin-12, SEPT12

Target/Specificity

This SEPT12 antibody is generated from rabbits immunized with a KLH conjugated synthetic peptide between 218-244 amino acids from the Central region of human SEPT12.

Dilution

WB~~1:1000

E~~Use at an assay dependent concentration.

Format

Purified polyclonal antibody supplied in PBS with 0.09% (W/V) sodium azide. This antibody is purified through a protein A column, followed by peptide affinity purification.

Storage

Maintain refrigerated at 2-8°C for up to 2 weeks. For long term storage store at -20°C in small aliquots to prevent freeze-thaw cycles.

Precautions

SEPT12 Antibody (Center) is for research use only and not for use in diagnostic or therapeutic procedures.

SEPT12 Antibody (Center) - Protein Information**Name** SEPTIN12 ([HGNC:26348](#))**Synonyms** SEPT12

Function Filament-forming cytoskeletal GTPase (By similarity). Involved in spermatogenesis. Involved in the morphogenesis of sperm heads and the elongation of sperm tails probably implicating the association with alpha- and beta-tubulins (PubMed:[24213608](#)). Forms a filamentous structure with SEPTIN7, SEPTIN6, SEPTIN2 and probably SEPTIN4 at the sperm annulus which is required for the structural integrity and motility of the sperm tail during postmeiotic differentiation (PubMed:[25588830](#)). May play a role in cytokinesis (Potential).

Cellular Location

Cytoplasm. Cytoplasm, cytoskeleton. Cytoplasm, cytoskeleton, spindle. Nucleus Cell projection, cilium, flagellum Note=At interphase, forms a filamentous structure in the cytoplasm During anaphase, translocates to the central spindle region and to the midbody during cytokinesis. Found in the sperm annulus. Colocalized with SPAG4 at the nuclear periphery in round spermatids, at sperm neck in elongated spermatids and at midpiece regions in ejaculated spermatozoa.

Tissue Location

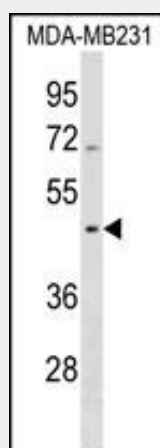
Widely expressed. Expressed in lymph node.

SEPT12 Antibody (Center) - Protocols

Provided below are standard protocols that you may find useful for product applications.

- [Western Blot](#)
- [Blocking Peptides](#)
- [Dot Blot](#)
- [Immunohistochemistry](#)
- [Immunofluorescence](#)
- [Immunoprecipitation](#)
- [Flow Cytometry](#)
- [Cell Culture](#)

SEPT12 Antibody (Center) - Images



SEPT12 Antibody (Center)(Cat. #AP19298c) western blot analysis in MDA-MB231 cell line lysates (35ug/lane). This demonstrates the SEPT12 antibody detected the SEPT12 protein (arrow).

SEPT12 Antibody (Center) - Background

Septins, such as SEPT12, are conserved GTP-binding proteins that function as dynamic, regulatable scaffolds for the recruitment of other proteins. They are involved in membrane

dynamics, vesicle trafficking, apoptosis, and cytoskeleton remodeling, as well as infection, neurodegeneration, and neoplasia (Hall et al., 2005 [PubMed 15915442]).

SEPT12 Antibody (Center) - References

Lin, Y.H., et al. Am. J. Pathol. 174(5):1857-1868(2009)
Ding, X., et al. Mol. Cells 25(3):385-389(2008)
Ding, X., et al. J. Biochem. Mol. Biol. 40(6):973-978(2007)
Lamesch, P., et al. Genomics 89(3):307-315(2007)
Hall, P.A., et al. J. Pathol. 206(3):269-278(2005)