

**SIRPB1 Antibody (Center)**  
**Affinity Purified Rabbit Polyclonal Antibody (Pab)**  
**Catalog # AP19299C****Specification**

---

**SIRPB1 Antibody (Center) - Product Information**

Application	WB,E
Primary Accession	<a href="#">O00241</a>
Other Accession	<a href="#">P78324</a> , <a href="#">NP_001077379.1</a>
Reactivity	Human
Host	Rabbit
Clonality	Polyclonal
Isotype	Rabbit IgG
Calculated MW	43211
Antigen Region	107-134

**SIRPB1 Antibody (Center) - Additional Information****Gene ID** 10326**Other Names**

Signal-regulatory protein beta-1, SIRP-beta-1, CD172 antigen-like family member B, CD172b, SIRPB1

**Target/Specificity**

This SIRPB1 antibody is generated from rabbits immunized with a KLH conjugated synthetic peptide between 107-134 amino acids from the Central region of human SIRPB1.

**Dilution**

WB~~1:1000

E~~Use at an assay dependent concentration.

**Format**

Purified polyclonal antibody supplied in PBS with 0.09% (W/V) sodium azide. This antibody is purified through a protein A column, followed by peptide affinity purification.

**Storage**

Maintain refrigerated at 2-8°C for up to 2 weeks. For long term storage store at -20°C in small aliquots to prevent freeze-thaw cycles.

**Precautions**

SIRPB1 Antibody (Center) is for research use only and not for use in diagnostic or therapeutic procedures.

**SIRPB1 Antibody (Center) - Protein Information****Name** SIRPB1

**Function** Immunoglobulin-like cell surface receptor involved in the negative regulation of receptor tyrosine kinase-coupled signaling processes. Also participates in the recruitment of tyrosine kinase SYK. Triggers activation of myeloid cells when associated with TYROBP (PubMed:[10604985](#)).

**Cellular Location**

Cell membrane; Single-pass type I membrane protein

**Tissue Location**

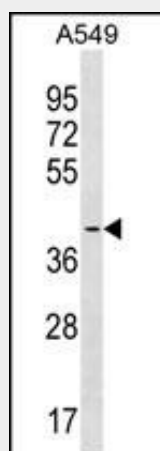
Detected in monocytes and dendritic cells.

### **SIRPB1 Antibody (Center) - Protocols**

Provided below are standard protocols that you may find useful for product applications.

- [Western Blot](#)
- [Blocking Peptides](#)
- [Dot Blot](#)
- [Immunohistochemistry](#)
- [Immunofluorescence](#)
- [Immunoprecipitation](#)
- [Flow Cytometry](#)
- [Cell Culture](#)

### **SIRPB1 Antibody (Center) - Images**



SIRPB1 Antibody (Center)(Cat. #AP19299c) western blot analysis in A549 cell line lysates (35ug/lane). This demonstrates the SIRPB1 antibody detected the SIRPB1 protein (arrow).

### **SIRPB1 Antibody (Center) - Background**

The protein encoded by this gene is a member of the signal-regulatory-protein (SIRP) family, and also belongs to the immunoglobulin superfamily. SIRP family members are receptor-type transmembrane glycoproteins known to be involved in the negative regulation of receptor tyrosine kinase-coupled signaling processes. This protein was found to interact with TYROBP/DAP12, a protein bearing immunoreceptor tyrosine-based activation motifs. This protein was also reported to participate in the recruitment of tyrosine kinase SYK. Multiple transcript variants encoding different isoforms have been found for this gene. [provided by

RefSeq].

### **SIRPB1 Antibody (Center) - References**

Gaikwad, S., et al. Am. J. Pathol. 175(6):2528-2539(2009)  
Martins-de-Souza, D., et al. Eur Arch Psychiatry Clin Neurosci 259(3):151-163(2009)  
Martins-de-Souza, D., et al. J Neural Transm 116(3):275-289(2009)  
Lamesch, P., et al. Genomics 89(3):307-315(2007)  
van den Berg, T.K., et al. J. Immunol. 175(12):7788-7789(2005)