

**FGF20 Antibody (C-term)**  
**Affinity Purified Rabbit Polyclonal Antibody (Pab)**  
**Catalog # AP19307b****Specification**

---

**FGF20 Antibody (C-term) - Product Information**

|                   |   |
|-------------------|---|
| Application       | WB,E  |
| Primary Accession | <a href="#">Q9NP95</a>  |
| Other Accession   | <a href="#">Q9EST9</a> , <a href="#">Q9ESL9</a> , <a href="#">NP_062825.1</a> |
| Reactivity        | Mouse   |
| Predicted         | Rat   |
| Host              | Rabbit  |
| Clonality         | Polyclonal  |
| Isotype           | Rabbit IgG  |
| Calculated MW     | 23499   |
| Antigen Region    | 136-165   |

**FGF20 Antibody (C-term) - Additional Information****Gene ID** 26281**Other Names**

Fibroblast growth factor 20, FGF-20, FGF20

**Target/Specificity**

This FGF20 antibody is generated from rabbits immunized with a KLH conjugated synthetic peptide between 136-165 amino acids from the C-terminal region of human FGF20.

**Dilution**

WB~~1:1000

E~~Use at an assay dependent concentration.

**Format**

Purified polyclonal antibody supplied in PBS with 0.09% (W/V) sodium azide. This antibody is purified through a protein A column, followed by peptide affinity purification.

**Storage**

Maintain refrigerated at 2-8°C for up to 2 weeks. For long term storage store at -20°C in small aliquots to prevent freeze-thaw cycles.

**Precautions**

FGF20 Antibody (C-term) is for research use only and not for use in diagnostic or therapeutic procedures.

**FGF20 Antibody (C-term) - Protein Information****Name** FGF20

**Function** Neurotrophic factor that regulates central nervous development and function.

**Cellular Location**

Secreted.

**Tissue Location**

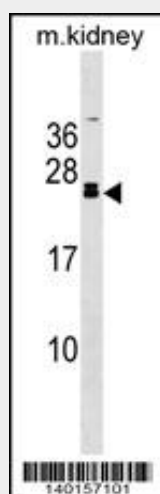
Predominantly expressed in the cerebellum.

**FGF20 Antibody (C-term) - Protocols**

Provided below are standard protocols that you may find useful for product applications.

- [Western Blot](#)
- [Blocking Peptides](#)
- [Dot Blot](#)
- [Immunohistochemistry](#)
- [Immunofluorescence](#)
- [Immunoprecipitation](#)
- [Flow Cytometry](#)
- [Cell Culture](#)

**FGF20 Antibody (C-term) - Images**



FGF20 Antibody (C-term)(Cat. #AP19307b) western blot analysis in mouse kidney tissue lysates (35ug/lane). This demonstrates the FGF20 antibody detected the FGF20 protein (arrow).

**FGF20 Antibody (C-term) - Background**

The protein encoded by this gene is a member of the fibroblast growth factor family. The fibroblast growth factors possess broad mitogenic and cell survival activities, and are involved in a variety of biological processes including embryonic development, cell growth, morphogenesis, tissue repair, tumor growth and invasion. This gene product is a secreted neurotrophic factor but lacks a typical signal peptide. It is expressed in normal brain, particularly the cerebellum, and may regulate central nervous system development and function. Homodimerization of this protein was shown to regulate its receptor binding activity and concentration gradient in the extracellular matrix. Genetic

variations of this gene have been associated with Parkinson disease susceptibility.

#### **FGF20 Antibody (C-term) - References**

de Mena, L., et al. Neurosci. Lett. 479(1):22-25(2010)  
Rose, J.E., et al. Mol. Med. 16 (7-8), 247-253 (2010) :  
Lemaitre, H., et al. J. Neurosci. 30(17):5992-5997(2010)  
Maity, H., et al. Curr Pharm Biotechnol 10(6):609-625(2009)  
Kalinina, J., et al. Mol. Cell. Biol. 29(17):4663-4678(2009)