

EIF2B3 Antibody (C-term)
Purified Rabbit Polyclonal Antibody (Pab)
Catalog # AP1930A**Specification**

EIF2B3 Antibody (C-term) - Product Information

Application	WB,E
Primary Accession	Q9NR50
Other Accession	Q4R6T3 , Q9HA31
Reactivity	Human
Predicted	Monkey
Host	Rabbit
Clonality	Polyclonal
Isotype	Rabbit IgG
Calculated MW	50240
Antigen Region	344-376

EIF2B3 Antibody (C-term) - Additional Information**Gene ID** 8891**Other Names**

Translation initiation factor eIF-2B subunit gamma, eIF-2B GDP-GTP exchange factor subunit gamma, EIF2B3

Target/Specificity

This EIF2B3 antibody is generated from rabbits immunized with a KLH conjugated synthetic peptide between 344-376 amino acids from the C-terminal region of human EIF2B3.

Dilution

WB~~1:1000

E~~Use at an assay dependent concentration.

Format

Purified polyclonal antibody supplied in PBS with 0.09% (W/V) sodium azide. This antibody is prepared by Saturated Ammonium Sulfate (SAS) precipitation followed by dialysis against PBS.

Storage

Maintain refrigerated at 2-8°C for up to 2 weeks. For long term storage store at -20°C in small aliquots to prevent freeze-thaw cycles.

Precautions

EIF2B3 Antibody (C-term) is for research use only and not for use in diagnostic or therapeutic procedures.

EIF2B3 Antibody (C-term) - Protein Information**Name** EIF2B3

Function Acts as a component of the translation initiation factor 2B (eIF2B) complex, which catalyzes the exchange of GDP for GTP on the eukaryotic initiation factor 2 (eIF2) complex gamma subunit (PubMed:[25858979](#), PubMed:[27023709](#), PubMed:[31048492](#)). Its guanine nucleotide exchange factor activity is repressed when bound to eIF2 complex phosphorylated on the alpha subunit, thereby limiting the amount of methionyl-initiator methionine tRNA available to the ribosome and consequently global translation is repressed (PubMed:[25858979](#), PubMed:[31048492](#)).

Cellular Location

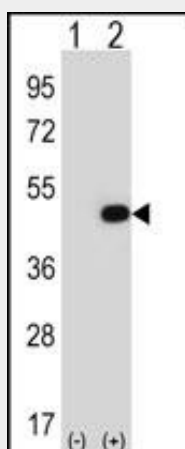
Cytoplasm, cytosol {ECO:0000250|UniProtKB:P56288}

EIF2B3 Antibody (C-term) - Protocols

Provided below are standard protocols that you may find useful for product applications.

- [Western Blot](#)
- [Blocking Peptides](#)
- [Dot Blot](#)
- [Immunohistochemistry](#)
- [Immunofluorescence](#)
- [Immunoprecipitation](#)
- [Flow Cytometry](#)
- [Cell Culture](#)

EIF2B3 Antibody (C-term) - Images



Western blot analysis of EIF2B3 (arrow) using rabbit polyclonal EIF2B3 Antibody (Cat. #AP1930a). 293 cell lysates (2 ug/lane) either nontransfected (Lane 1) or transiently transfected (Lane 2) with the EIF2B3 gene.

EIF2B3 Antibody (C-term) - Background

EIF2B3 catalyzes the exchange of eukaryotic initiation factor 2-bound GDP for GTP. Mutations in each of the five subunits of translation initiation factor eIF2B, including subunit 3, can cause leukoencephalopathy with vanishing white matter. EIF2B3 has also been identified as a cofactor of hepatitis C virus internal ribosome entry site-mediated translation.

EIF2B3 Antibody (C-term) - References

van der Knaap, M.S., et al., Ann. Neurol. 51(2):264-270 (2002).

Kruger, M., et al., Proc. Natl. Acad. Sci. U.S.A. 97(15):8566-8571 (2000).
Gomez, E., et al., Mol. Cell. Biol. 20(11):3965-3976 (2000).