

PPP2R5D Antibody (N-term)
Affinity Purified Rabbit Polyclonal Antibody (Pab)
Catalog # AP19327a

Specification

PPP2R5D Antibody (N-term) - Product Information

Application	WB,E
Primary Accession	Q14738
Other Accession	Q28653 , NP_851308.1
Reactivity	Human
Predicted	Rabbit
Host	Rabbit
Clonality	Polyclonal
Isotype	Rabbit IgG
Calculated MW	69992
Antigen Region	63-91

PPP2R5D Antibody (N-term) - Additional Information

Gene ID 5528

Other Names

Serine/threonine-protein phosphatase 2A 56 kDa regulatory subunit delta isoform, PP2A B subunit isoform B'-delta, PP2A B subunit isoform B56-delta, PP2A B subunit isoform PR61-delta, PP2A B subunit isoform R5-delta, PPP2R5D

Target/Specificity

This PPP2R5D antibody is generated from rabbits immunized with a KLH conjugated synthetic peptide between 63-91 amino acids from the N-terminal region of human PPP2R5D.

Dilution

WB~~1:1000

E~~Use at an assay dependent concentration.

Format

Purified polyclonal antibody supplied in PBS with 0.09% (W/V) sodium azide. This antibody is purified through a protein A column, followed by peptide affinity purification.

Storage

Maintain refrigerated at 2-8°C for up to 2 weeks. For long term storage store at -20°C in small aliquots to prevent freeze-thaw cycles.

Precautions

PPP2R5D Antibody (N-term) is for research use only and not for use in diagnostic or therapeutic procedures.

PPP2R5D Antibody (N-term) - Protein Information

Name PPP2R5D

Function The B regulatory subunit might modulate substrate selectivity and catalytic activity, and might also direct the localization of the catalytic enzyme to a particular subcellular compartment.

Cellular Location

Cytoplasm. Nucleus. Note=Nuclear in interphase, nuclear during mitosis

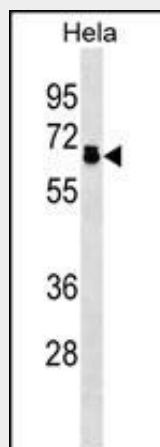
Tissue Location

Isoform Delta-2 is widely expressed. Isoform Delta- 1 is highly expressed in brain

PPP2R5D Antibody (N-term) - Protocols

Provided below are standard protocols that you may find useful for product applications.

- [Western Blot](#)
- [Blocking Peptides](#)
- [Dot Blot](#)
- [Immunohistochemistry](#)
- [Immunofluorescence](#)
- [Immunoprecipitation](#)
- [Flow Cytometry](#)
- [Cell Culture](#)

PPP2R5D Antibody (N-term) - Images

PPP2R5D Antibody (N-term)(Cat. #AP19327a) western blot analysis in HeLa cell line lysates (35ug/lane). This demonstrates the PPP2R5D antibody detected the PPP2R5D protein (arrow).

PPP2R5D Antibody (N-term) - Background

The product of this gene belongs to the phosphatase 2A regulatory subunit B family. Protein phosphatase 2A is one of the four major Ser/Thr phosphatases, and it is implicated in the negative control of cell growth and division. It consists of a common heteromeric core enzyme, which is composed of a catalytic subunit and a constant regulatory subunit, that associates with a variety of regulatory subunits. The B regulatory subunit might modulate substrate selectivity and catalytic activity. This gene encodes a delta isoform of the regulatory subunit B56 subfamily.

Alternatively spliced transcript variants encoding different isoforms have been identified.

PPP2R5D Antibody (N-term) - References

Yu, U.Y., et al. BMB Rep 43(4):263-267(2010)
Reece, K.M., et al. Biochem. Biophys. Res. Commun. 386(4):582-587(2009)
Forester, C.M., et al. Proc. Natl. Acad. Sci. U.S.A. 104(50):19867-19872(2007)
Sablina, A.A., et al. Cell 129(5):969-982(2007)
Sugiyama, N., et al. Mol. Cell Proteomics 6(6):1103-1109(2007)