

Mouse Ei24 Antibody (C-term)
Affinity Purified Rabbit Polyclonal Antibody (Pab)
Catalog # AP19339b

Specification

Mouse Ei24 Antibody (C-term) - Product Information

Application	WB,E
Primary Accession	Q61070
Other Accession	Q4KM77 , O14681 , Q08DE5 , NP_031941.1
Reactivity	Mouse
Predicted	Bovine, Human, Rat
Host	Rabbit
Clonality	Polyclonal
Isotype	Rabbit IgG
Calculated MW	38933
Antigen Region	263-290

Mouse Ei24 Antibody (C-term) - Additional Information

Gene ID 13663

Other Names

Etoposide-induced protein 24, p53-induced gene 8 protein, Ei24, Pig8

Target/Specificity

This Mouse Ei24 antibody is generated from rabbits immunized with a KLH conjugated synthetic peptide between 263-290 amino acids from the C-terminal region of mouse Ei24.

Dilution

WB~~1:1000

E~~Use at an assay dependent concentration.

Format

Purified polyclonal antibody supplied in PBS with 0.09% (W/V) sodium azide. This antibody is purified through a protein A column, followed by peptide affinity purification.

Storage

Maintain refrigerated at 2-8°C for up to 2 weeks. For long term storage store at -20°C in small aliquots to prevent freeze-thaw cycles.

Precautions

Mouse Ei24 Antibody (C-term) is for research use only and not for use in diagnostic or therapeutic procedures.

Mouse Ei24 Antibody (C-term) - Protein Information

Name Ei24

Synonyms Pig8

Function Acts as a negative growth regulator via p53-mediated apoptosis pathway. Regulates formation of degradative autolysosomes during autophagy (By similarity).

Cellular Location

Nucleus membrane; Multi-pass membrane protein. Cytoplasm. Endoplasmic reticulum membrane; Multi-pass membrane protein

Tissue Location

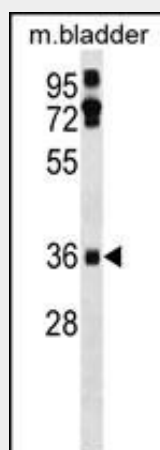
Found in all the examined tissues. High expression was found in liver, skeletal muscle, pancreas, kidney heart and to a lesser extent in brain, placenta and lung

Mouse Ei24 Antibody (C-term) - Protocols

Provided below are standard protocols that you may find useful for product applications.

- [Western Blot](#)
- [Blocking Peptides](#)
- [Dot Blot](#)
- [Immunohistochemistry](#)
- [Immunofluorescence](#)
- [Immunoprecipitation](#)
- [Flow Cytometry](#)
- [Cell Culture](#)

Mouse Ei24 Antibody (C-term) - Images



Mouse Ei24 Antibody (C-term)(Cat. #AP19339b) western blot analysis in mouse bladder tissue lysates (35ug/lane). This demonstrates the Ei24 antibody detected the Ei24 protein (arrow).

Mouse Ei24 Antibody (C-term) - Background

Ei24 may play a role in the cellular response to DNA damage and/or p53-mediated apoptosis.

Mouse Ei24 Antibody (C-term) - References

Bahk, Y.Y., et al. J. Proteome Res. 9(10):5270-5283(2010)
Mork, C.N., et al. FEBS Lett. 581(28):5440-5444(2007)
Lee, J., et al. Mol. Cell Proteomics 6(4):669-676(2007)

Colombo, E., et al. Mol. Cell. Biol. 25(20):8874-8886(2005)
McClive, P.J., et al. Genesis 37(2):84-90(2003)