

Mouse Ccna1 Antibody (Center)
Affinity Purified Rabbit Polyclonal Antibody (Pab)
Catalog # AP19342C**Specification**

Mouse Ccna1 Antibody (Center) - Product Information

Application	WB,E
Primary Accession	Q61456
Other Accession	Q6AY13 , NP_031654.2
Reactivity	Mouse
Predicted	Rat
Host	Rabbit
Clonality	Polyclonal
Isotype	Rabbit IgG
Calculated MW	47772
Antigen Region	162-188

Mouse Ccna1 Antibody (Center) - Additional Information**Gene ID** 12427**Other Names**

Cyclin-A1, Ccna1

Target/Specificity

This Mouse Ccna1 antibody is generated from rabbits immunized with a KLH conjugated synthetic peptide between 162-188 amino acids from the Central region of mouse Ccna1.

Dilution

WB~~1:1000

E~~Use at an assay dependent concentration.

Format

Purified polyclonal antibody supplied in PBS with 0.09% (W/V) sodium azide. This antibody is purified through a protein A column, followed by peptide affinity purification.

Storage

Maintain refrigerated at 2-8°C for up to 2 weeks. For long term storage store at -20°C in small aliquots to prevent freeze-thaw cycles.

Precautions

Mouse Ccna1 Antibody (Center) is for research use only and not for use in diagnostic or therapeutic procedures.

Mouse Ccna1 Antibody (Center) - Protein Information**Name** Ccna1

Function May be involved in the control of the cell cycle at the G1/S (start) and G2/M (mitosis) transitions. May primarily function in the control of the germline meiotic cell cycle and additionally in the control of mitotic cell cycle in some somatic cells.

Cellular Location

Nucleus {ECO:0000250|UniProtKB:P20248}. Cytoplasm, cytoskeleton, spindle. Note=In oocytes at least, it associates with the spindle during metaphase

Tissue Location

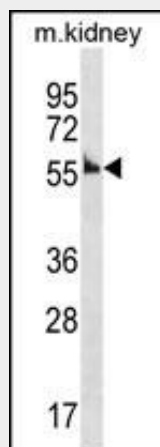
Testis and ovaries..

Mouse Ccna1 Antibody (Center) - Protocols

Provided below are standard protocols that you may find useful for product applications.

- [Western Blot](#)
- [Blocking Peptides](#)
- [Dot Blot](#)
- [Immunohistochemistry](#)
- [Immunofluorescence](#)
- [Immunoprecipitation](#)
- [Flow Cytometry](#)
- [Cell Culture](#)

Mouse Ccna1 Antibody (Center) - Images



Mouse Ccna1 Antibody (Center)(Cat. #AP19342c) western blot analysis in mouse kidney tissue lysates (35ug/lane). This demonstrates the Ccna1 antibody detected the Ccna1 protein (arrow).

Mouse Ccna1 Antibody (Center) - Background

Ccna1 may be involved in the control of the cell cycle at the G1/S (start) and G2/M (mitosis) transitions. May primarily function in the control of the germline meiotic cell cycle and additionally in the control of mitotic cell cycle in some somatic cells.

Mouse Ccna1 Antibody (Center) - References

Yoshimura, T., et al. Dev. Biol. 335(1):216-227(2009)
Burnicka-Turek, O., et al. Endocrinology 150(9):4348-4357(2009)
McCoy, E.L., et al. Oral Dis 15(6):407-413(2009)

Kalaszczynska, I., et al. Cell 138(2):352-365(2009)
Krug, U., et al. Int. J. Oncol. 34(1):129-136(2009)