

Mouse Selenbp1 Antibody (C-term)
Affinity Purified Rabbit Polyclonal Antibody (Pab)
Catalog # AP19344b**Specification**

Mouse Selenbp1 Antibody (C-term) - Product Information

Application	WB,E
Primary Accession	P17563
Other Accession	Q63836 , NP_033176.2
Reactivity	Human
Predicted	Mouse
Host	Rabbit
Clonality	Polyclonal
Isotype	Rabbit IgG
Calculated MW	52514
Antigen Region	318-344

Mouse Selenbp1 Antibody (C-term) - Additional Information**Gene ID** 20341**Other Names**

Selenium-binding protein 1, 56 kDa selenium-binding protein, SBP56, SP56, Selenbp1, Lpsb

Target/Specificity

This Mouse Selenbp1 antibody is generated from rabbits immunized with a KLH conjugated synthetic peptide between 318-344 amino acids from the C-terminal region of mouse Selenbp1.

Dilution

WB~~1:1000

E~~Use at an assay dependent concentration.

Format

Purified polyclonal antibody supplied in PBS with 0.09% (W/V) sodium azide. This antibody is purified through a protein A column, followed by peptide affinity purification.

Storage

Maintain refrigerated at 2-8°C for up to 2 weeks. For long term storage store at -20°C in small aliquots to prevent freeze-thaw cycles.

Precautions

Mouse Selenbp1 Antibody (C-term) is for research use only and not for use in diagnostic or therapeutic procedures.

Mouse Selenbp1 Antibody (C-term) - Protein Information**Name** Selenbp1

Synonyms Lpsb

Function Catalyzes the oxidation of methanethiol, an organosulfur compound known to be produced in substantial amounts by gut bacteria (PubMed:[29255262](#)). Selenium-binding protein which may be involved in the sensing of reactive xenobiotics in the cytoplasm. May be involved in intra-Golgi protein transport (By similarity).

Cellular Location

Nucleus {ECO:0000250|UniProtKB:Q13228}. Cytoplasm, cytosol {ECO:0000250|UniProtKB:Q13228}. Membrane {ECO:0000250|UniProtKB:Q8VIF7}; Peripheral membrane protein {ECO:0000250|UniProtKB:Q8VIF7}. Note=May associate with Golgi membrane (By similarity). May associate with the membrane of autophagosomes (By similarity). {ECO:0000250|UniProtKB:Q8VIF7}

Tissue Location

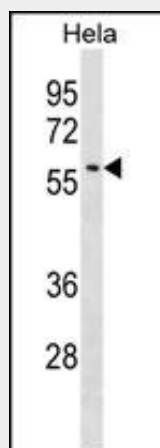
Highly expressed in liver, kidney and, to a lesser extent, lung

Mouse Selenbp1 Antibody (C-term) - Protocols

Provided below are standard protocols that you may find useful for product applications.

- [Western Blot](#)
- [Blocking Peptides](#)
- [Dot Blot](#)
- [Immunohistochemistry](#)
- [Immunofluorescence](#)
- [Immunoprecipitation](#)
- [Flow Cytometry](#)
- [Cell Culture](#)

Mouse Selenbp1 Antibody (C-term) - Images



Mouse Selenbp1 Antibody (C-term)(Cat. #AP19344b) western blot analysis in Hela cell line lysates (35ug/lane). This demonstrates the Selenbp1 antibody detected the Selenbp1 protein (arrow).

Mouse Selenbp1 Antibody (C-term) - Background

Selenium-binding protein which may be involved in the sensing of reactive xenobiotics in the cytoplasm. May be involved in intra-Golgi protein transport (By similarity).

Mouse Selenbp1 Antibody (C-term) - References

- Pohl, N.M., et al. PLoS ONE 4 (11), E7774 (2009) :
Wu, Y., et al. Am. J. Physiol. Endocrinol. Metab. 295 (1), E205-E215 (2008) :
Karim, S.A., et al. Genomics 83(2):225-230(2004)
Jin, W.H., et al. Rapid Commun. Mass Spectrom. 18(18):2169-2176(2004)
Pajukanta, P., et al. Mamm. Genome 12(3):238-245(2001)