

PASD1 Antibody (Center)
Affinity Purified Rabbit Polyclonal Antibody (Pab)
Catalog # AP19356c

Specification

PASD1 Antibody (Center) - Product Information

Application	WB,E
Primary Accession	Q8IV76
Other Accession	NP_775764.2
Reactivity	Human
Host	Rabbit
Clonality	Polyclonal
Isotype	Rabbit IgG
Calculated MW	87428
Antigen Region	283-310

PASD1 Antibody (Center) - Additional Information

Gene ID 139135

Other Names

PAS domain-containing protein 1, Cancer/testis antigen 63, CT63, OX-TES-1, PASD1

Target/Specificity

This PASD1 antibody is generated from rabbits immunized with a KLH conjugated synthetic peptide between 283-310 amino acids from the Central region of human PASD1.

Dilution

WB~~1:1000

E~~Use at an assay dependent concentration.

Format

Purified polyclonal antibody supplied in PBS with 0.09% (W/V) sodium azide. This antibody is purified through a protein A column, followed by peptide affinity purification.

Storage

Maintain refrigerated at 2-8°C for up to 2 weeks. For long term storage store at -20°C in small aliquots to prevent freeze-thaw cycles.

Precautions

PASD1 Antibody (Center) is for research use only and not for use in diagnostic or therapeutic procedures.

PASD1 Antibody (Center) - Protein Information

Name PASD1 ([HGNC:20686](#))

Function Functions as a suppressor of the biological clock that drives the daily circadian rhythms

of cells throughout the body (PubMed:[25936801](#)). Acts as a nuclear repressor of the CLOCK-BMAL1 heterodimer-mediated transcriptional activation of the core clock components (PubMed:[25936801](#)). Inhibits circadian clock function in cancer cells, when overexpressed (PubMed:[25936801](#)).

Cellular Location

[Isoform 1]: Nucleus. Note=Associates preferentially at the periphery of the nucleus with heterochromatin (PubMed:25936801)

Tissue Location

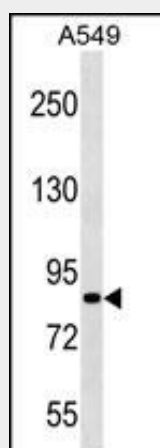
Testis-specific (PubMed:25936801). Expressed in a broad range of cancer cells, including melanoma, lung cancer, and breast cancer (at protein level). Testis-specific (PubMed:15162151) Found in histologically normal tissues from patients with uterus, lung and small intestine cancers. Widespread expression seen in solid tumors and diffuse large B-cell lymphoma (DLBCL)-derived cell lines. Isoform 2 is expressed in all DLBCL-derived cell lines, while isoform 1 is preferentially expressed in cell lines derived from non-germinal center DLBCL (PubMed:15162151).

PASD1 Antibody (Center) - Protocols

Provided below are standard protocols that you may find useful for product applications.

- [Western Blot](#)
- [Blocking Peptides](#)
- [Dot Blot](#)
- [Immunohistochemistry](#)
- [Immunofluorescence](#)
- [Immunoprecipitation](#)
- [Flow Cytometry](#)
- [Cell Culture](#)

PASD1 Antibody (Center) - Images



PASD1 Antibody (Center)(Cat. #AP19356c) western blot analysis in A549 cell line lysates (35ug/lane). This demonstrates the PASD1 antibody detected the PASD1 protein (arrow).

PASD1 Antibody (Center) - Background

This gene encodes a protein that is thought to function as a transcription factor. The protein is a cancer-associated antigen that can stimulate autologous T-cell responses, and it is therefore

considered to be a potential immunotherapeutic target for the treatment of various hematopoietic malignancies, including diffuse large B-cell lymphoma.

PASD1 Antibody (Center) - References

Ghafouri-Fard, S., et al. Br. J. Dermatol. 162(4):772-779(2010)
Ait-Tahar, K., et al. Br. J. Haematol. 146(4):396-407(2009)
Sahota, S.S., et al. Blood 108(12):3953-3955(2006)
Cooper, C.D., et al. Leukemia 20(12):2172-2174(2006)
Guinn, B.A., et al. Biochem. Biophys. Res. Commun. 335(4):1293-1304(2005)