

**SMG5 Antibody (C-term)**  
**Affinity Purified Rabbit Polyclonal Antibody (Pab)**  
**Catalog # AP19361B****Specification**

---

**SMG5 Antibody (C-term) - Product Information**

Application	WB,E
Primary Accession	<a href="#">O9UPR3</a>
Other Accession	<a href="#">O6ZPY2</a> , <a href="#">NP_056142.2</a>
Reactivity	Human
Predicted	Mouse
Host	Rabbit
Clonality	Polyclonal
Isotype	Rabbit IgG
Calculated MW	113928
Antigen Region	912-941

**SMG5 Antibody (C-term) - Additional Information****Gene ID** 23381**Other Names**

Protein SMG5, EST1-like protein B, LPTS-RP1, LPTS-interacting protein, SMG-5 homolog, hSMG-5, SMG5, EST1B, KIAA1089

**Target/Specificity**

This SMG5 antibody is generated from rabbits immunized with a KLH conjugated synthetic peptide between 912-941 amino acids from the C-terminal region of human SMG5.

**Dilution**

WB~~1:1000

E~~Use at an assay dependent concentration.

**Format**

Purified polyclonal antibody supplied in PBS with 0.09% (W/V) sodium azide. This antibody is purified through a protein A column, followed by peptide affinity purification.

**Storage**

Maintain refrigerated at 2-8°C for up to 2 weeks. For long term storage store at -20°C in small aliquots to prevent freeze-thaw cycles.

**Precautions**

SMG5 Antibody (C-term) is for research use only and not for use in diagnostic or therapeutic procedures.

**SMG5 Antibody (C-term) - Protein Information****Name** SMG5 ([HGNC:24644](#))

**Function** Plays a role in nonsense-mediated mRNA decay. Does not have RNase activity by itself. Promotes dephosphorylation of UPF1. Together with SMG7 is thought to provide a link to the mRNA degradation machinery involving exonucleolytic pathways, and to serve as an adapter for UPF1 to protein phosphatase 2A (PP2A), thereby triggering UPF1 dephosphorylation. Necessary for TERT activity.

**Cellular Location**

Cytoplasm. Nucleus. Note=Predominantly cytoplasmic, and nuclear. Shuttles between nucleus and cytoplasm. Detected in cytoplasmic mRNA decay bodies

**Tissue Location**

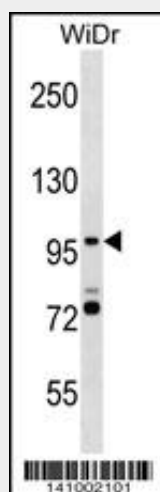
Ubiquitous.

**SMG5 Antibody (C-term) - Protocols**

Provided below are standard protocols that you may find useful for product applications.

- [Western Blot](#)
- [Blocking Peptides](#)
- [Dot Blot](#)
- [Immunohistochemistry](#)
- [Immunofluorescence](#)
- [Immunoprecipitation](#)
- [Flow Cytometry](#)
- [Cell Culture](#)

**SMG5 Antibody (C-term) - Images**



SMG5 Antibody (C-term)(Cat. #AP19361b) western blot analysis in WiDr cell line lysates (35ug/lane). This demonstrates the SMG5 antibody detected the SMG5 protein (arrow).

**SMG5 Antibody (C-term) - Background**

SMG5 is involved in nonsense-mediated mRNA decay (Ohnishi et al., 2003 [PubMed 14636577]).

**SMG5 Antibody (C-term) - References**

Kamatani, Y., et al. Nat. Genet. 42(3):210-215(2010)

Glavan, F., et al. EMBO J. 25(21):5117-5125(2006)  
Lee, H., et al. Mol. Cell. Biol. 26(14):5259-5269(2006)  
Azzalin, C.M., et al. Curr. Biol. 16(4):433-439(2006)  
Unterholzner, L., et al. Mol. Cell 16(4):587-596(2004)