

**CDK2AP2 Antibody(Center)**  
**Affinity Purified Rabbit Polyclonal Antibody (Pab)**  
**Catalog # AP19378c****Specification**

---

**CDK2AP2 Antibody(Center) - Product Information**

Application	WB,E
Primary Accession	<a href="#">O75956</a>
Other Accession	<a href="#">O9CPY4</a> , <a href="#">O58CN7</a> , <a href="#">NP_005842.1</a>
Reactivity	Human
Predicted	Bovine, Mouse
Host	Rabbit
Clonality	Polyclonal
Isotype	Rabbit IgG
Calculated MW	13101
Antigen Region	64-92

**CDK2AP2 Antibody(Center) - Additional Information****Gene ID** 10263**Other Names**

Cyclin-dependent kinase 2-associated protein 2, CDK2-associated protein 2, DOC-1-related protein, DOC-1R, CDK2AP2, DOC1R

**Target/Specificity**

This CDK2AP2 antibody is generated from rabbits immunized with a KLH conjugated synthetic peptide between 64-92 amino acids from the Central region of human CDK2AP2.

**Dilution**

WB~~1:1000

E~~Use at an assay dependent concentration.

**Format**

Purified polyclonal antibody supplied in PBS with 0.09% (W/V) sodium azide. This antibody is purified through a protein A column, followed by peptide affinity purification.

**Storage**

Maintain refrigerated at 2-8°C for up to 2 weeks. For long term storage store at -20°C in small aliquots to prevent freeze-thaw cycles.

**Precautions**

CDK2AP2 Antibody(Center) is for research use only and not for use in diagnostic or therapeutic procedures.

**CDK2AP2 Antibody(Center) - Protein Information****Name** CDK2AP2

**Synonyms** DOC1R

**Function** Acts as a component of the histone deacetylase NuRD complex which participates in the remodeling of chromatin (PubMed:[33283408](#)). Inhibits cell cycle G1/S phase transition by repressing CDK2 expression and activation; represses CDK2 activation by inhibiting its interaction with cyclin E and A (PubMed:[23781148](#)). Plays a role in regulating the self-renewal of embryonic stem cells (ESCs) and in maintaining cell survival during terminal differentiation of ESCs (By similarity). Regulates microtubule organization of metaphase II oocytes (By similarity).

**Cellular Location**

Cytoplasm. Nucleus Note=Accumulates in immature oocytes in the nucleus. During the first meiotic division, accumulates in the cytoplasm and localizes in dots in the vicinity of the chromosomes in a region enriched in microtubules {ECO:0000250|UniProtKB:Q9CPY4}

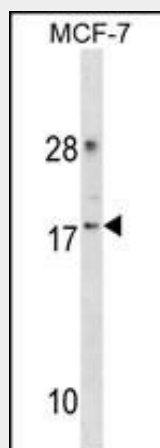
**Tissue Location**

Ubiquitous..

**CDK2AP2 Antibody(Center) - Protocols**

Provided below are standard protocols that you may find useful for product applications.

- [Western Blot](#)
- [Blocking Peptides](#)
- [Dot Blot](#)
- [Immunohistochemistry](#)
- [Immunofluorescence](#)
- [Immunoprecipitation](#)
- [Flow Cytometry](#)
- [Cell Culture](#)

**CDK2AP2 Antibody(Center) - Images**

CDK2AP2 Antibody (Center)(Cat. #AP19378c) western blot analysis in MCF-7 cell line lysates (35ug/lane). This demonstrates the CDK2AP2 antibody detected the CDK2AP2 protein (arrow).

**CDK2AP2 Antibody(Center) - Background**

Belongs to the CDK2AP family.

**CDK2AP2 Antibody(Center) - References**

Buajeeb, W., et al. Biochem. Biophys. Res. Commun. 315(4):998-1003(2004)  
Zhang, X., et al. Biochem. Biophys. Res. Commun. 255(1):59-63(1999)