

SH3BP4 Antibody(Center)
Affinity Purified Rabbit Polyclonal Antibody (Pab)
Catalog # AP19380C**Specification**

SH3BP4 Antibody(Center) - Product Information

Application	WB,E
Primary Accession	O9P0V3
Other Accession	NP_055336.1
Reactivity	Human
Host	Rabbit
Clonality	Polyclonal
Isotype	Rabbit IgG
Calculated MW	107496
Antigen Region	402-429

SH3BP4 Antibody(Center) - Additional Information**Gene ID** 23677**Other Names**

SH3 domain-binding protein 4, EH-binding protein 10, Transferrin receptor-trafficking protein, SH3BP4, BOG25, EHB10, TTP

Target/Specificity

This SH3BP4 antibody is generated from rabbits immunized with a KLH conjugated synthetic peptide between 402-429 amino acids from the Central region of human SH3BP4.

Dilution

WB~~1:1000

E~~Use at an assay dependent concentration.

Format

Purified polyclonal antibody supplied in PBS with 0.09% (W/V) sodium azide. This antibody is purified through a protein A column, followed by peptide affinity purification.

Storage

Maintain refrigerated at 2-8°C for up to 2 weeks. For long term storage store at -20°C in small aliquots to prevent freeze-thaw cycles.

Precautions

SH3BP4 Antibody(Center) is for research use only and not for use in diagnostic or therapeutic procedures.

SH3BP4 Antibody(Center) - Protein Information**Name** SH3BP4

Synonyms BOG25, EHB10, TTP

Function May function in transferrin receptor internalization at the plasma membrane through a cargo-specific control of clathrin-mediated endocytosis. Alternatively, may act as a negative regulator of the amino acid-induced TOR signaling by inhibiting the formation of active Rag GTPase complexes. Preferentially binds inactive Rag GTPase complexes and prevents their interaction with the mTORC1 complex inhibiting its relocalization to lysosomes and its activation. Thereby, may indirectly regulate cell growth, proliferation and autophagy.

Cellular Location

Membrane, clathrin-coated pit. Cytoplasmic vesicle, clathrin-coated vesicle. Nucleus
Note=Specifically associated with transferrin receptor-containing clathrin-coated pits and clathrin-coated vesicles. May also localize to the nucleus

Tissue Location

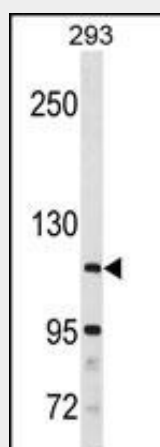
Expressed in all tissues tested with higher expression in pancreas. Expressed by retinal pigment epithelial cells (at protein level).

SH3BP4 Antibody(Center) - Protocols

Provided below are standard protocols that you may find useful for product applications.

- [Western Blot](#)
- [Blocking Peptides](#)
- [Dot Blot](#)
- [Immunohistochemistry](#)
- [Immunofluorescence](#)
- [Immunoprecipitation](#)
- [Flow Cytometry](#)
- [Cell Culture](#)

SH3BP4 Antibody(Center) - Images



SH3BP4 Antibody (Center)(Cat. #AP19380c) western blot analysis in 293 cell line lysates (35ug/lane). This demonstrates the SH3BP4 antibody detected the SH3BP4 protein (arrow).

SH3BP4 Antibody(Center) - Background

This gene encodes a protein with 3 Asn-Pro-Phe (NPF) motifs, an SH3 domain, a PXXP motif, a bipartite nuclear targeting

signal, and a tyrosine phosphorylation site. This protein is involved in cargo-specific control of clathrin-mediated endocytosis, specifically controlling the internalization of a specific protein receptor.

SH3BP4 Antibody(Center) - References

Sebastiani, P., et al. Science (2010) In press :
Rose, J.E., et al. Mol. Med. 16 (7-8), 247-253 (2010) :
Thalappilly, S., et al. Proteomics 8(15):3071-3081(2008)
Ewing, R.M., et al. Mol. Syst. Biol. 3, 89 (2007) :
Olsen, J.V., et al. Cell 127(3):635-648(2006)