

Mouse Tshz1 Antibody(Center)
Affinity Purified Rabbit Polyclonal Antibody (Pab)
Catalog # AP19383c

Specification

Mouse Tshz1 Antibody(Center) - Product Information

Application	WB,E
Primary Accession	Q5DTH5
Other Accession	NP_001074769.1
Reactivity	Human, Mouse
Host	Rabbit
Clonality	Polyclonal
Isotype	Rabbit IgG
Calculated MW	118567
Antigen Region	639-665

Mouse Tshz1 Antibody(Center) - Additional Information

Gene ID 110796

Other Names

Teashirt homolog 1, Serologically defined colon cancer antigen 3 homolog, Tshz1, Kiaa4206, Sdccag33, Tsh1

Target/Specificity

This Mouse Tshz1 antibody is generated from rabbits immunized with a KLH conjugated synthetic peptide between 639-665 amino acids from the Central region of mouse Tshz1.

Dilution

WB~~1:1000

E~~Use at an assay dependent concentration.

Format

Purified polyclonal antibody supplied in PBS with 0.09% (W/V) sodium azide. This antibody is purified through a protein A column, followed by peptide affinity purification.

Storage

Maintain refrigerated at 2-8°C for up to 2 weeks. For long term storage store at -20°C in small aliquots to prevent freeze-thaw cycles.

Precautions

Mouse Tshz1 Antibody(Center) is for research use only and not for use in diagnostic or therapeutic procedures.

Mouse Tshz1 Antibody(Center) - Protein Information

Name Tshz1

Synonyms Kiaa4206, Sdccag33, Tsh1

Function Probable transcriptional regulator involved in developmental processes. May act as a transcriptional repressor (Potential).

Cellular Location

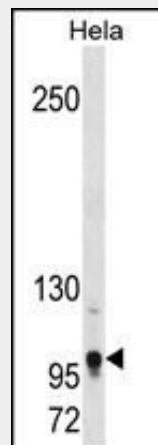
Nucleus.

Mouse Tshz1 Antibody(Center) - Protocols

Provided below are standard protocols that you may find useful for product applications.

- [Western Blot](#)
- [Blocking Peptides](#)
- [Dot Blot](#)
- [Immunohistochemistry](#)
- [Immunofluorescence](#)
- [Immunoprecipitation](#)
- [Flow Cytometry](#)
- [Cell Culture](#)

Mouse Tshz1 Antibody(Center) - Images



Mouse Tshz1 Antibody (Center)(Cat. #AP19383c) western blot analysis in HeLa cell line lysates (35ug/lane).This demonstrates the Mouse Tshz1 antibody detected the Mouse Tshz1 protein (arrow).

Mouse Tshz1 Antibody(Center) - Background

Probable transcriptional regulator involved in developmental processes. May act as a transcriptional repressor (Potential).

Mouse Tshz1 Antibody(Center) - References

- Endoh-Yamagami, S., et al. Dev. Biol. 340(1):41-53(2010)
Jenkins, D., et al. Nephrol. Dial. Transplant. 25(1):54-60(2010)
Carney, R.S., et al. Cereb. Cortex 19(4):745-759(2009)
Kajiwara, Y., et al. PLoS ONE 4 (4), E5071 (2009) :
Core, N., et al. Dev. Biol. 308(2):407-420(2007)