

Mouse Tmem158 Antibody (Center)
Affinity Purified Rabbit Polyclonal Antibody (Pab)
Catalog # AP19388c

Specification

Mouse Tmem158 Antibody (Center) - Product Information

| | |
|-------------------|--|
| Application | WB,E |
| Primary Accession | Q6F5E0 |
| Other Accession | Q91XV7 , Q8WZ71 , A2VDX9 |
| Reactivity | Mouse |
| Predicted | Bovine, Human, Rat |
| Host | Rabbit |
| Clonality | Polyclonal |
| Isotype | Rabbit IgG |
| Antigen Region | 179-206 |

Mouse Tmem158 Antibody (Center) - Additional Information

Other Names

Transmembrane protein 158, 40 kDa BINP-binding protein, p40BBP, Ras-induced senescence protein 1, Tmem158, Mbbp, Ris1

Target/Specificity

This Mouse Tmem158 antibody is generated from rabbits immunized with a KLH conjugated synthetic peptide between 179-206 amino acids from the central region of mouse Tmem158.

Dilution

WB~~1:1000

E~~Use at an assay dependent concentration.

Format

Purified polyclonal antibody supplied in PBS with 0.09% (W/V) sodium azide. This antibody is purified through a protein A column, followed by peptide affinity purification.

Storage

Maintain refrigerated at 2-8°C for up to 2 weeks. For long term storage store at -20°C in small aliquots to prevent freeze-thaw cycles.

Precautions

Mouse Tmem158 Antibody (Center) is for research use only and not for use in diagnostic or therapeutic procedures.

Mouse Tmem158 Antibody (Center) - Protein Information

Name Tmem158

Synonyms Mbbp, Ris1

Function Receptor for brain injury-derived neurotrophic peptide (BINP), a synthetic 13-mer peptide.

Cellular Location

Membrane; Multi-pass membrane protein

Tissue Location

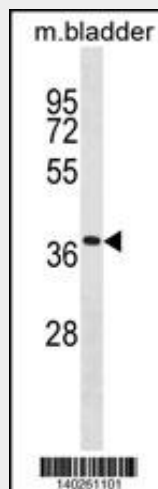
Ubiquitously expressed. Brain is the major site of expression.

Mouse Tmem158 Antibody (Center) - Protocols

Provided below are standard protocols that you may find useful for product applications.

- [Western Blot](#)
- [Blocking Peptides](#)
- [Dot Blot](#)
- [Immunohistochemistry](#)
- [Immunofluorescence](#)
- [Immunoprecipitation](#)
- [Flow Cytometry](#)
- [Cell Culture](#)

Mouse Tmem158 Antibody (Center) - Images



Mouse Tmem158 Antibody (Center) (Cat. #AP19388c) western blot analysis in mouse bladder tissue lysates (35ug/lane). This demonstrates the Mouse Tmem158 antibody detected the Mouse Tmem158 protein (arrow).

Mouse Tmem158 Antibody (Center) - Background

Receptor for brain injury-derived neurotrophic peptide (BINP), a synthetic 13-mer peptide (By similarity).