

**COL10A1 Antibody(N-term)**  
**Affinity Purified Rabbit Polyclonal Antibody (Pab)**  
**Catalog # AP19393a**

**Specification**

---

**COL10A1 Antibody(N-term) - Product Information**

Application	WB,E
Primary Accession	<a href="#">Q03692</a>
Other Accession	<a href="#">NP_000484.2</a>
Reactivity	Human
Host	Rabbit
Clonality	Polyclonal
Isotype	Rabbit IgG
Calculated MW	66158
Antigen Region	29-58

**COL10A1 Antibody(N-term) - Additional Information**

**Gene ID** 1300

**Other Names**

Collagen alpha-1(X) chain, COL10A1

**Target/Specificity**

This COL10A1 antibody is generated from rabbits immunized with a KLH conjugated synthetic peptide between 29-58 amino acids from the N-terminal region of human COL10A1.

**Dilution**

WB~~1:1000

E~~Use at an assay dependent concentration.

**Format**

Purified polyclonal antibody supplied in PBS with 0.09% (W/V) sodium azide. This antibody is purified through a protein A column, followed by peptide affinity purification.

**Storage**

Maintain refrigerated at 2-8°C for up to 2 weeks. For long term storage store at -20°C in small aliquots to prevent freeze-thaw cycles.

**Precautions**

COL10A1 Antibody(N-term) is for research use only and not for use in diagnostic or therapeutic procedures.

**COL10A1 Antibody(N-term) - Protein Information**

**Name** COL10A1

**Function** Type X collagen is a product of hypertrophic chondrocytes and has been localized to

presumptive mineralization zones of hyaline cartilage.

#### **Cellular Location**

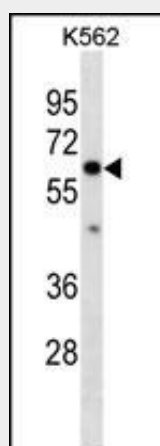
Secreted, extracellular space, extracellular matrix

#### **COL10A1 Antibody(N-term) - Protocols**

Provided below are standard protocols that you may find useful for product applications.

- [Western Blot](#)
- [Blocking Peptides](#)
- [Dot Blot](#)
- [Immunohistochemistry](#)
- [Immunofluorescence](#)
- [Immunoprecipitation](#)
- [Flow Cytometry](#)
- [Cell Culture](#)

#### **COL10A1 Antibody(N-term) - Images**



COL10A1 Antibody (N-term)(Cat. #AP19393a) western blot analysis in K562 cell line lysates (35ug/lane). This demonstrates the COL10A1 antibody detected the COL10A1 protein (arrow).

#### **COL10A1 Antibody(N-term) - Background**

This gene encodes the alpha chain of type X collagen, a short chain collagen expressed by hypertrophic chondrocytes during endochondral ossification. Unlike type VIII collagen, the other short chain collagen, type X collagen is a homotrimer. Mutations in this gene are associated with Schmid type metaphyseal chondrodysplasia (SMCD) and Japanese type spondylometaphyseal dysplasia (SMD).

#### **COL10A1 Antibody(N-term) - References**

Makitie, O., et al. J. Orthop. Res. 28(11):1497-1501(2010)  
Wang, S., et al. Connect. Tissue Res. 51(3):188-196(2010)  
Videman, T., et al. Arthritis Rheum. 60(2):470-481(2009)  
Higashikawa, A., et al. Arthritis Rheum. 60(1):166-178(2009)  
Zimmermann, P., et al. Arthritis Rheum. 58(9):2743-2753(2008)