

**ILKAP Antibody(Center)**  
**Affinity Purified Rabbit Polyclonal Antibody (Pab)**  
**Catalog # AP19399c****Specification**

---

**ILKAP Antibody(Center) - Product Information**

Application	WB,E
Primary Accession	<a href="#">Q9H0C8</a>
Other Accession	<a href="#">Q9Z1Z6</a> , <a href="#">Q8R0F6</a> , <a href="#">Q0IIF0</a> , <a href="#">NP_110395.1</a>
Reactivity	Human
Predicted	Bovine, Mouse, Rat
Host	Rabbit
Clonality	Polyclonal
Isotype	Rabbit IgG
Calculated MW	42907
Antigen Region	93-122

**ILKAP Antibody(Center) - Additional Information****Gene ID** 80895**Other Names**

Integrin-linked kinase-associated serine/threonine phosphatase 2C, ILKAP, ILKAP

**Target/Specificity**

This ILKAP antibody is generated from rabbits immunized with a KLH conjugated synthetic peptide between 93-122 amino acids from the Central region of human ILKAP.

**Dilution**

WB~~1:1000

E~~Use at an assay dependent concentration.

**Format**

Purified polyclonal antibody supplied in PBS with 0.09% (W/V) sodium azide. This antibody is purified through a protein A column, followed by peptide affinity purification.

**Storage**

Maintain refrigerated at 2-8°C for up to 2 weeks. For long term storage store at -20°C in small aliquots to prevent freeze-thaw cycles.

**Precautions**

ILKAP Antibody(Center) is for research use only and not for use in diagnostic or therapeutic procedures.

**ILKAP Antibody(Center) - Protein Information****Name** ILKAP

**Function** Protein phosphatase that may play a role in regulation of cell cycle progression via dephosphorylation of its substrates whose appropriate phosphorylation states might be crucial for cell proliferation. Selectively associates with integrin linked kinase (ILK), to modulate cell adhesion and growth factor signaling. Inhibits the ILK-GSK3B signaling axis and may play an important role in inhibiting oncogenic transformation.

**Cellular Location**

Cytoplasm.

**Tissue Location**

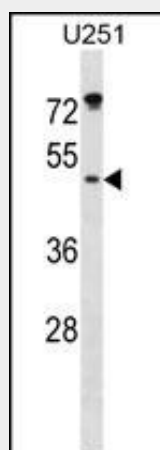
Widely expressed. Highest levels expressed in striated muscle. Much lower levels evident in various smooth muscle tissues.

**ILKAP Antibody(Center) - Protocols**

Provided below are standard protocols that you may find useful for product applications.

- [Western Blot](#)
- [Blocking Peptides](#)
- [Dot Blot](#)
- [Immunohistochemistry](#)
- [Immunofluorescence](#)
- [Immunoprecipitation](#)
- [Flow Cytometry](#)
- [Cell Culture](#)

**ILKAP Antibody(Center) - Images**



ILKAP Antibody (Center)(Cat. #AP19399c) western blot analysis in U251 cell line lysates (35ug/lane). This demonstrates the ILKAP antibody detected the ILKAP protein (arrow).

**ILKAP Antibody(Center) - Background**

The protein encoded by this gene is a protein serine/threonine phosphatase of the PP2C family. This protein can interact with integrin-linked kinase (ILK/ILK1), a regulator of integrin mediated signaling, and regulate the kinase activity of ILK. Through the interaction with ILK, this protein may selectively affect the signaling process of ILK-mediated glycogen synthase kinase 3 beta (GSK3beta), and thus participate in Wnt signaling

pathway.

#### **ILKAP Antibody(Center) - References**

Nakrieko, K.A., et al. Cell Cycle 7(14):2157-2166(2008)  
Olsen, J.V., et al. Cell 127(3):635-648(2006)  
Olsen, J.V., et al. Cell 127(3):635-648(2006)  
Hillier, L.W., et al. Nature 434(7034):724-731(2005)  
Kumar, A.S., et al. Oncogene 23(19):3454-3461(2004)