

EVX1 Antibody(Center)
Affinity Purified Rabbit Polyclonal Antibody (Pab)
Catalog # AP19402c**Specification**

EVX1 Antibody(Center) - Product Information

Application	WB,E
Primary Accession	P49640
Other Accession	P50476 , P49749 , Q03828 , P23683 , NP_001980.1
Reactivity	Human
Predicted	Mouse, Xenopus
Host	Rabbit
Clonality	Polyclonal
Isotype	Rabbit IgG
Calculated MW	42440
Antigen Region	172-200

EVX1 Antibody(Center) - Additional Information**Gene ID** 2128**Other Names**

Homeobox even-skipped homolog protein 1, EVX-1, EVX1

Target/Specificity

This EVX1 antibody is generated from rabbits immunized with a KLH conjugated synthetic peptide between 172-200 amino acids from the Central region of human EVX1.

Dilution

WB~~1:1000

E~~Use at an assay dependent concentration.

Format

Purified polyclonal antibody supplied in PBS with 0.09% (W/V) sodium azide. This antibody is purified through a protein A column, followed by peptide affinity purification.

Storage

Maintain refrigerated at 2-8°C for up to 2 weeks. For long term storage store at -20°C in small aliquots to prevent freeze-thaw cycles.

Precautions

EVX1 Antibody(Center) is for research use only and not for use in diagnostic or therapeutic procedures.

EVX1 Antibody(Center) - Protein Information**Name** EVX1

Function May play a role in the specification of neuronal cell types.

Cellular Location

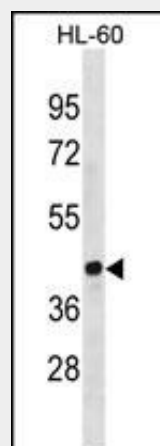
Nucleus.

EVX1 Antibody(Center) - Protocols

Provided below are standard protocols that you may find useful for product applications.

- [Western Blot](#)
- [Blocking Peptides](#)
- [Dot Blot](#)
- [Immunohistochemistry](#)
- [Immunofluorescence](#)
- [Immunoprecipitation](#)
- [Flow Cytometry](#)
- [Cell Culture](#)

EVX1 Antibody(Center) - Images



EVX1 Antibody (Center)(Cat. #AP19402c) western blot analysis in HL-60 cell line lysates (35ug/lane). This demonstrates the EVX1 antibody detected the EVX1 protein (arrow).

EVX1 Antibody(Center) - Background

This gene encodes a member of the even-skipped homeobox family characterized by the presence of a homeodomain closely related to the Drosophila even-skipped (eve) segmentation gene of the pair-rule class. The encoded protein may play an important role as a transcriptional repressor during embryogenesis. [provided by RefSeq].

EVX1 Antibody(Center) - References

Smith, N.L., et al. Circ Cardiovasc Genet 3(3):256-266(2010)
Briata, P., et al. J. Biol. Chem. 270(46):27695-27701(1995)
Faiella, A., et al. Nucleic Acids Res. 19(23):6541-6545(1991)