

**MRPL24 Antibody (C-term)**  
**Purified Rabbit Polyclonal Antibody (Pab)**  
**Catalog # AP1940b****Specification**

---

**MRPL24 Antibody (C-term) - Product Information**

Application	WB,E
Primary Accession	<a href="#">Q96A35</a>
Reactivity	Human, Mouse
Host	Rabbit
Clonality	Polyclonal
Isotype	Rabbit IgG
Calculated MW	24915
Antigen Region	185-214

**MRPL24 Antibody (C-term) - Additional Information****Gene ID** 79590**Other Names**

39S ribosomal protein L24, mitochondrial, L24mt, MRP-L24, MRPL24

**Target/Specificity**

This MRPL24 antibody is generated from rabbits immunized with a KLH conjugated synthetic peptide between 185-214 amino acids from the C-terminal region of human MRPL24.

**Dilution**

WB~~1:1000

E~~Use at an assay dependent concentration.

**Format**

Purified polyclonal antibody supplied in PBS with 0.09% (W/V) sodium azide. This antibody is prepared by Saturated Ammonium Sulfate (SAS) precipitation followed by dialysis against PBS.

**Storage**

Maintain refrigerated at 2-8°C for up to 2 weeks. For long term storage store at -20°C in small aliquots to prevent freeze-thaw cycles.

**Precautions**

MRPL24 Antibody (C-term) is for research use only and not for use in diagnostic or therapeutic procedures.

**MRPL24 Antibody (C-term) - Protein Information****Name** MRPL24**Cellular Location**

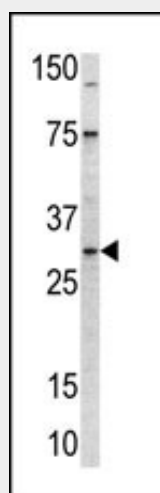
Mitochondrion

## MRPL24 Antibody (C-term) - Protocols

Provided below are standard protocols that you may find useful for product applications.

- [Western Blot](#)
- [Blocking Peptides](#)
- [Dot Blot](#)
- [Immunohistochemistry](#)
- [Immunofluorescence](#)
- [Immunoprecipitation](#)
- [Flow Cytometry](#)
- [Cell Culture](#)

## MRPL24 Antibody (C-term) - Images



Western blot analysis of anti-MRPL24 Pab (Cat. #AP1940b) in mouse kidney tissue lysate (35ug/lane). MRPL24 (arrow) was detected using the purified Pab.

## MRPL24 Antibody (C-term) - Background

Mammalian mitochondrial ribosomal proteins are encoded by nuclear genes and help in protein synthesis within the mitochondrion. Mitochondrial ribosomes (mitoribosomes) consist of a small 28S subunit and a large 39S subunit. They have an estimated 75% protein to rRNA composition compared to prokaryotic ribosomes, where this ratio is reversed. Another difference between mammalian mitoribosomes and prokaryotic ribosomes is that the latter contain a 5S rRNA. Among different species, the proteins comprising the mitoribosome differ greatly in sequence, and sometimes in biochemical properties, which prevents easy recognition by sequence homology. MRPL24 is a 39S subunit protein which is more than twice the size of its E.coli counterpart (EcoL24).

## MRPL24 Antibody (C-term) - References

- Zhang, Z., et al., Genomics 81(5):468-480 (2003).  
O'Brien, T.W., et al., J. Biol. Chem. 275(24):18153-18159 (2000).  
Kenmochi, N., et al., Genomics 77 (1-2), 65-70 (2001).