

**CCNDBP1 Antibody(N-term)**  
**Affinity Purified Rabbit Polyclonal Antibody (Pab)**  
**Catalog # AP19416a****Specification**

---

**CCNDBP1 Antibody(N-term) - Product Information**

Application	WB,E
Primary Accession	<a href="#">O95273</a>
Other Accession	<a href="#">Q4R809</a> , <a href="#">NP_036274.3</a>
Reactivity	Human
Predicted	Monkey
Host	Rabbit
Clonality	Polyclonal
Isotype	Rabbit IgG
Calculated MW	40262
Antigen Region	21-49

**CCNDBP1 Antibody(N-term) - Additional Information****Gene ID** 23582**Other Names**

Cyclin-D1-binding protein 1, Grap2 and cyclin-D-interacting protein, Human homolog of Maid, CCNDBP1, DIP1, GCIP, HHM

**Target/Specificity**

This CCNDBP1 antibody is generated from rabbits immunized with a KLH conjugated synthetic peptide between 21-49 amino acids from the N-terminal region of human CCNDBP1.

**Dilution**

WB~~1:1000

E~~Use at an assay dependent concentration.

**Format**

Purified polyclonal antibody supplied in PBS with 0.09% (W/V) sodium azide. This antibody is purified through a protein A column, followed by peptide affinity purification.

**Storage**

Maintain refrigerated at 2-8°C for up to 2 weeks. For long term storage store at -20°C in small aliquots to prevent freeze-thaw cycles.

**Precautions**

CCNDBP1 Antibody(N-term) is for research use only and not for use in diagnostic or therapeutic procedures.

**CCNDBP1 Antibody(N-term) - Protein Information****Name** CCNDBP1

**Synonyms** DIP1, GCIP, HHM

**Function** May negatively regulate cell cycle progression. May act at least in part via inhibition of the cyclin-D1/CDK4 complex, thereby preventing phosphorylation of RB1 and blocking E2F-dependent transcription.

**Cellular Location**  
Cytoplasm. Nucleus.

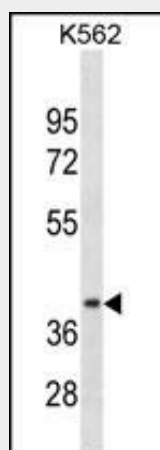
**Tissue Location**  
Ubiquitously expressed. Expression is down-regulated in a variety of tumor types including breast, colon, prostate and rectal tumors, and is up-regulated in certain hepatic carcinomas

### **CCNDBP1 Antibody(N-term) - Protocols**

Provided below are standard protocols that you may find useful for product applications.

- [Western Blot](#)
- [Blocking Peptides](#)
- [Dot Blot](#)
- [Immunohistochemistry](#)
- [Immunofluorescence](#)
- [Immunoprecipitation](#)
- [Flow Cytometry](#)
- [Cell Culture](#)

### **CCNDBP1 Antibody(N-term) - Images**



CCNDBP1 Antibody (N-term)(Cat. #AP19416a) western blot analysis in K562 cell line lysates (35ug/lane). This demonstrates the CCNDBP1 antibody detected the CCNDBP1 protein (arrow).

### **CCNDBP1 Antibody(N-term) - Background**

This gene was identified by the interaction of its gene product with Grap2, a leukocyte-specific adaptor protein important for immune cell signaling. The protein encoded by this gene was shown to interact with cyclin D. Transfection of this gene in cells was reported to reduce the phosphorylation of Rb gene product by cyclin D-dependent protein kinase, and inhibit E2F1-mediated transcription activity. This protein was also found to interact

with helix-loop-helix protein E12 and is thought to be a negative regulator of liver-specific gene expression. Several alternatively spliced variants have been found for this gene. [provided by RefSeq].

#### **CCNDBP1 Antibody(N-term) - References**

Lee, I., et al. Cancer Res. 70(11):4357-4365(2010)  
Seto, A., et al. Acta Crystallogr. Sect. F Struct. Biol. Cryst. Commun. 65 (PT 1), 21-24 (2009) :  
Ikushima, H., et al. EMBO J. 27(22):2955-2965(2008)  
Chen, W.C., et al. Histopathology 53(5):554-560(2008)  
Chang, T.W., et al. Oncogene 27(3):332-338(2008)