

**PRRX1 Antibody(C-term)**  
**Affinity Purified Rabbit Polyclonal Antibody (Pab)**  
**Catalog # AP19418b**

**Specification**

---

**PRRX1 Antibody(C-term) - Product Information**

Application	WB,E
Primary Accession	<a href="#">P54821</a>
Other Accession	<a href="#">P63014</a> , <a href="#">P63013</a> , <a href="#">Q05437</a> , <a href="#">NP_073207.1</a>
Reactivity	Human
Predicted	Chicken, Mouse, Rat
Host	Rabbit
Clonality	Polyclonal
Isotype	Rabbit IgG
Antigen Region	213-242

**PRRX1 Antibody(C-term) - Additional Information**

**Gene ID** 5396

**Other Names**

Paired mesoderm homeobox protein 1, Homeobox protein PHOX1, Paired-related homeobox protein 1, PRX-1, PRRX1, PMX1

**Target/Specificity**

This PRRX1 antibody is generated from rabbits immunized with a KLH conjugated synthetic peptide between 213-242 amino acids from the C-terminal region of human PRRX1.

**Dilution**

WB~~1:1000

E~~Use at an assay dependent concentration.

**Format**

Purified polyclonal antibody supplied in PBS with 0.09% (W/V) sodium azide. This antibody is purified through a protein A column, followed by peptide affinity purification.

**Storage**

Maintain refrigerated at 2-8°C for up to 2 weeks. For long term storage store at -20°C in small aliquots to prevent freeze-thaw cycles.

**Precautions**

PRRX1 Antibody(C-term) is for research use only and not for use in diagnostic or therapeutic procedures.

**PRRX1 Antibody(C-term) - Protein Information**

**Name** PRRX1

## Synonyms PMX1

**Function** Master transcription factor of stromal fibroblasts for myofibroblastic lineage progression. Orchestrates the functional drift of fibroblasts into myofibroblastic phenotype via TGF-beta signaling by remodeling a super-enhancer landscape. Through this function, plays an essential role in wound healing process (PubMed:[35589735](#)). Acts as a transcriptional regulator of muscle creatine kinase (MCK) and so has a role in the establishment of diverse mesodermal muscle types. The protein binds to an A/T-rich element in the muscle creatine enhancer (By similarity). May play a role in homeostasis and regeneration of bone, white adipose tissue and derm (By similarity).

## Cellular Location

Nucleus {ECO:0000250|UniProtKB:P63013}.

## Tissue Location

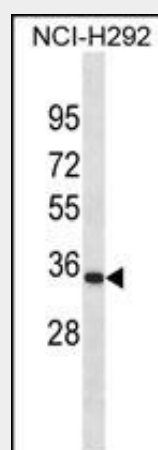
[Isoform 1]: Widely expressed in embryonic and adult tissues, with highest levels in skeletal muscle. Isoform 1 is either expressed at similar or higher levels compared to isoform 2 in all embryonic tissues but skeletal muscle and heart. In adult tissues, expressed at lower levels compared to isoform 2

## PRRX1 Antibody(C-term) - Protocols

Provided below are standard protocols that you may find useful for product applications.

- [Western Blot](#)
- [Blocking Peptides](#)
- [Dot Blot](#)
- [Immunohistochemistry](#)
- [Immunofluorescence](#)
- [Immunoprecipitation](#)
- [Flow Cytometry](#)
- [Cell Culture](#)

## PRRX1 Antibody(C-term) - Images



PRRX1 Antibody (C-term)(Cat. #AP19418b) western blot analysis in NCI-H292 cell line lysates (35ug/lane). This demonstrates the PRRX1 antibody detected the PRRX1 protein (arrow).

## PRRX1 Antibody(C-term) - Background

The DNA-associated protein encoded by this gene is a

member of the paired family of homeobox proteins localized to the nucleus. The protein functions as a transcription co-activator, enhancing the DNA-binding activity of serum response factor, a protein required for the induction of genes by growth and differentiation factors. The protein regulates muscle creatine kinase, indicating a role in the establishment of diverse mesodermal muscle types. Alternative splicing yields two isoforms that differ in abundance and expression patterns. [provided by RefSeq].

#### **PRRX1 Antibody(C-term) - References**

Jugessur, A., et al. PLoS ONE 5 (7), E11493 (2010) :  
Hirose, K., et al. Oncogene 27(46):6056-6067(2008)  
Vieira, A.R., et al. Genet. Med. 10(9):668-674(2008)  
Jiang, F., et al. Exp. Biol. Med. (Maywood) 233(3):286-296(2008)  
Kim, Y.J., et al. Cancer Res. 67(2):546-554(2007)