

Mouse Ephb6 Antibody(Center)
Affinity Purified Rabbit Polyclonal Antibody (Pab)
Catalog # AP19421c**Specification**

Mouse Ephb6 Antibody(Center) - Product Information

Application	WB,E
Primary Accession	O08644
Other Accession	P0C0K7 , O15197 , NP_001139823.1
Reactivity	Mouse
Predicted	Human, Rat
Host	Rabbit
Clonality	Polyclonal
Isotype	Rabbit IgG
Calculated MW	110107
Antigen Region	503-530

Mouse Ephb6 Antibody(Center) - Additional Information**Gene ID** 13848**Other Names**

Ephrin type-B receptor 6, MEP, Tyrosine-protein kinase-defective receptor EPH-6, Ephb6, Cekl

Target/Specificity

This Mouse Ephb6 antibody is generated from rabbits immunized with a KLH conjugated synthetic peptide between 503-530 amino acids from the Central region of mouse Ephb6.

Dilution

WB~~1:1000

E~~Use at an assay dependent concentration.

Format

Purified polyclonal antibody supplied in PBS with 0.09% (W/V) sodium azide. This antibody is purified through a protein A column, followed by peptide affinity purification.

Storage

Maintain refrigerated at 2-8°C for up to 2 weeks. For long term storage store at -20°C in small aliquots to prevent freeze-thaw cycles.

Precautions

Mouse Ephb6 Antibody(Center) is for research use only and not for use in diagnostic or therapeutic procedures.

Mouse Ephb6 Antibody(Center) - Protein Information**Name** Ephb6

Synonyms Cekl

Function Kinase-defective receptor for members of the ephrin-B family. Binds to ephrin-B1 and ephrin-B2. Modulates cell adhesion and migration by exerting both positive and negative effects upon stimulation with ephrin-B2. Inhibits JNK activation, T-cell receptor-induced IL-2 secretion and CD25 expression upon stimulation with ephrin-B2 (By similarity).

Cellular Location

[Isoform 1]: Cell membrane; Single-pass type I membrane protein [Isoform 3]: Secreted.

Tissue Location

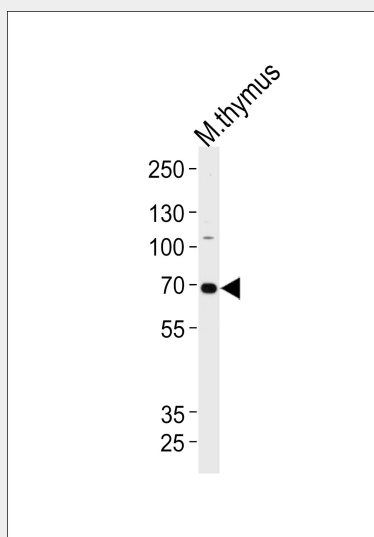
High level in thymus, and brain. Very low levels of expression in kidney, lung, liver, bone marrow, skeletal muscle, spleen from 2 week old and adult mice, heart, testes and embryonic stem cells

Mouse Ephb6 Antibody(Center) - Protocols

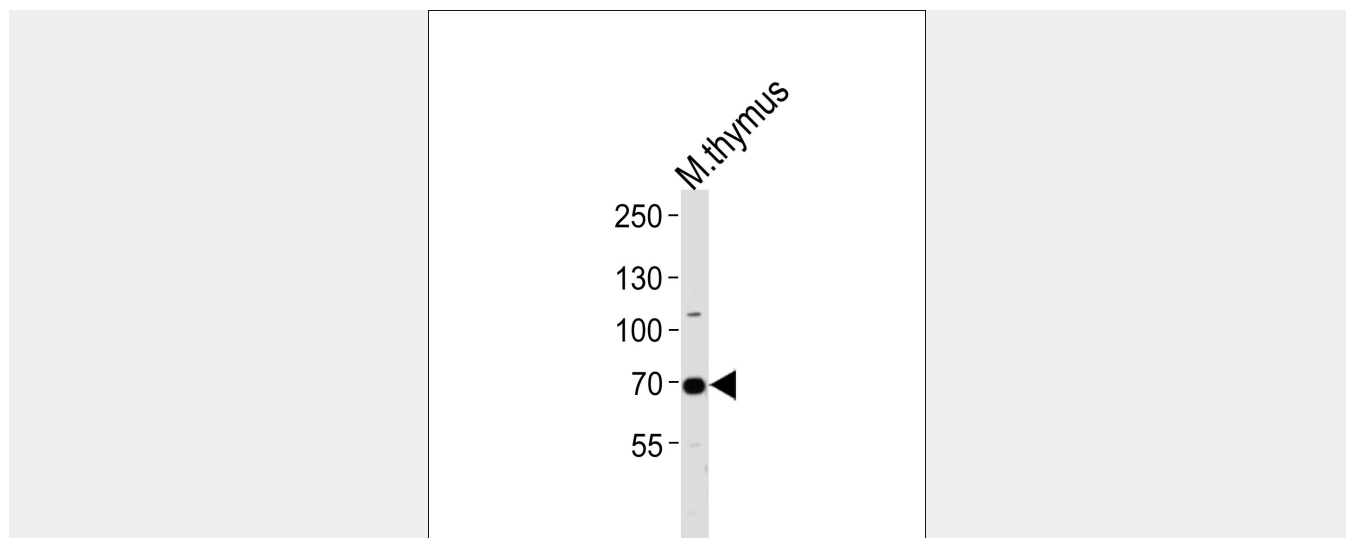
Provided below are standard protocols that you may find useful for product applications.

- [Western Blot](#)
- [Blocking Peptides](#)
- [Dot Blot](#)
- [Immunohistochemistry](#)
- [Immunofluorescence](#)
- [Immunoprecipitation](#)
- [Flow Cytometry](#)
- [Cell Culture](#)

Mouse Ephb6 Antibody(Center) - Images



Western blot analysis of lysate from mouse thymus tissue lysate, using Mouse Ephb6 Antibody (Center)(Cat. #AP19421c). AP19421c was diluted at 1:1000 at each lane. A goat anti-rabbit IgG H&L(HRP) at 1:5000 dilution was used as the secondary antibody. Lysate at 35ug per lane.



Western blot analysis of lysate from mouse thymus tissue lysate, using Mouse Ephb6 Antibody (Center)(Cat. #AP19421c). AP19421c was diluted at 1:1000 at each lane. A goat anti-rabbit IgG H&L(HRP) at 1:5000 dilution was used as the secondary antibody. Lysate at 35ug per lane.

Mouse Ephb6 Antibody(Center) - Background

Kinase-defective receptor for members of the ephrin-B family. Binds to ephrin-B1 and ephrin-B2. Modulates cell adhesion and migration by exerting both positive and negative effects upon stimulation with ephrin-B2. Inhibits JNK activation, T cell receptor-induced IL-2 secretion and CD25 expression upon stimulation with ephrin-B2 (By similarity).

Mouse Ephb6 Antibody(Center) - References

Islam, S., et al. Dig. Dis. Sci. 55(9):2478-2488(2010)
Lieben, L., et al. Bone 47(2):301-308(2010)
Mordan-McCombs, S., et al. J. Steroid Biochem. Mol. Biol. 121 (1-2), 368-371 (2010) :
Zirzow, S., et al. Dev. Biol. 336(2):145-155(2009)
Chou, S.J., et al. Nat. Neurosci. 12(11):1381-1389(2009)